

The Commons Local Nature Reserve

Bird Ringing – Species Totals

30 September 1995 to 31 December 2017

Licensed Ringers: Peter Oakenfull, Barry Trevis, Keith Seaman, Mike Reed, Paul Marriott, Stuart Kato, Mark Ferris, Mike Collard, Robin Cole, Tom Kittle, Paul Jerem, Barry Williams, Keith Dean, Keith Smith.

| <u>Species</u> | <u>New</u> | <u>Retraps/Recoveries</u> | <u>All</u> |
|---------------------------|------------|---------------------------|------------|
| Stock Dove | 9 | 0 | 9 |
| Wood Pigeon | 15 | 0 | 15 |
| Collared Dove | 1 | 0 | 1 |
| Tawny Owl | 4 | 0 | 4 |
| Barn Owl | 5 | 0 | 5 |
| Green Woodpecker | 3 | 0 | 3 |
| Great Spotted Woodpecker | 12 | 4 | 16 |
| Lesser Spotted Woodpecker | 1 | 0 | 1 |
| Skylark | 30 | 0 | 30 |
| Meadow Pipit | 2 | 0 | 2 |
| Dunnock | 252 | 235 | 487 |
| Robin | 210 | 102 | 312 |
| Song Thrush | 87 | 18 | 105 |
| Redwing | 64 | 1 | 65 |
| Mistle Thrush | 4 | 0 | 4 |
| Fieldfare | 1 | 0 | 1 |
| Blackbird | 303 | 117 | 420 |
| Garden Warbler | 8 | 0 | 8 |
| Blackcap | 132 | 5 | 137 |
| Whitethroat | 18 | 3 | 21 |
| Lesser Whitethroat | 1 | 0 | 1 |
| Sedge Warbler | 5 | 0 | 5 |

| | | | |
|-----------------|------|-----|------|
| Reed Warbler | 1 | 0 | 1 |
| Willow Warbler | 6 | 0 | 6 |
| Chiffchaff | 146 | 25 | 171 |
| Goldcrest | 125 | 34 | 159 |
| Wren | 147 | 55 | 202 |
| Great Tit | 1158 | 409 | 1567 |
| Coal Tit | 47 | 25 | 72 |
| Blue Tit | 2005 | 589 | 2594 |
| Marsh Tit | 16 | 12 | 28 |
| Willow Tit | 1 | 0 | 1 |
| Long-tailed Tit | 246 | 161 | 407 |
| Nuthatch | 14 | 0 | 14 |
| Treecreeper | 19 | 6 | 25 |
| Magpie | 13 | 0 | 13 |
| Jay | 16 | 1 | 17 |
| Starling | 20 | 0 | 2 |
| House Sparrow | 210 | 38 | 487 |
| Chaffinch | 516 | 113 | 629 |
| Brambling | 63 | 1 | 64 |
| Linnet | 389 | 35 | 424 |
| Redpoll | 26 | 2 | 28 |
| Goldfinch | 263 | 35 | 298 |
| Greenfinch | 513 | 31 | 544 |
| Siskin | 37 | 2 | 39 |
| Bullfinch | 109 | 46 | 155 |
| Reed Bunting | 280 | 326 | 606 |
| Yellowhammer | 406 | 93 | 499 |

Other key species recorded on The Commons LNR

Little Egret

Grey Heron

Grey Partridge

Snipe

Woodcock

Green Sandpiper

Red Kite

Buzzard

Hobby

Kestrel

Sparrowhawk

Cuckoo

Little Owl

Short-eared Owl

Kingfisher

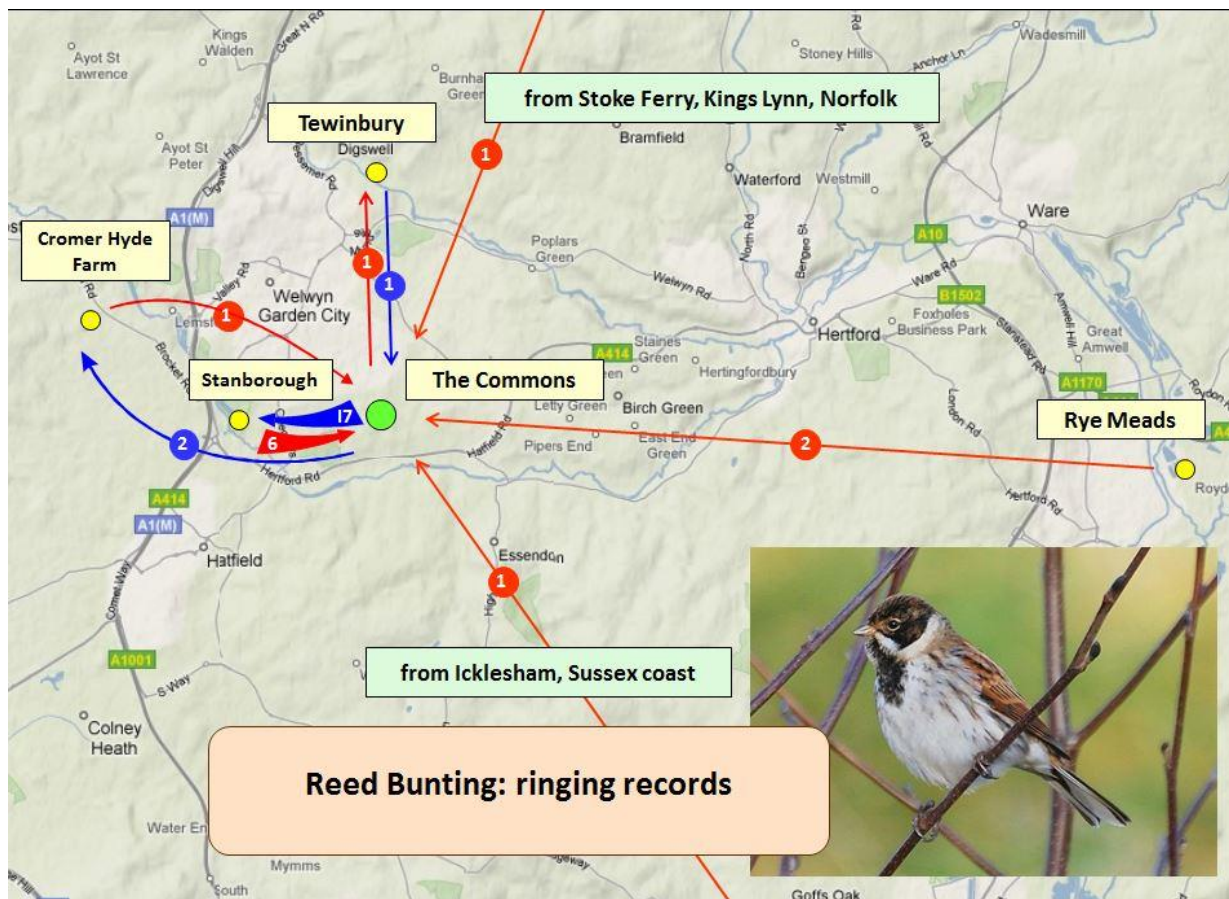
Grey Wagtail

Wheatear

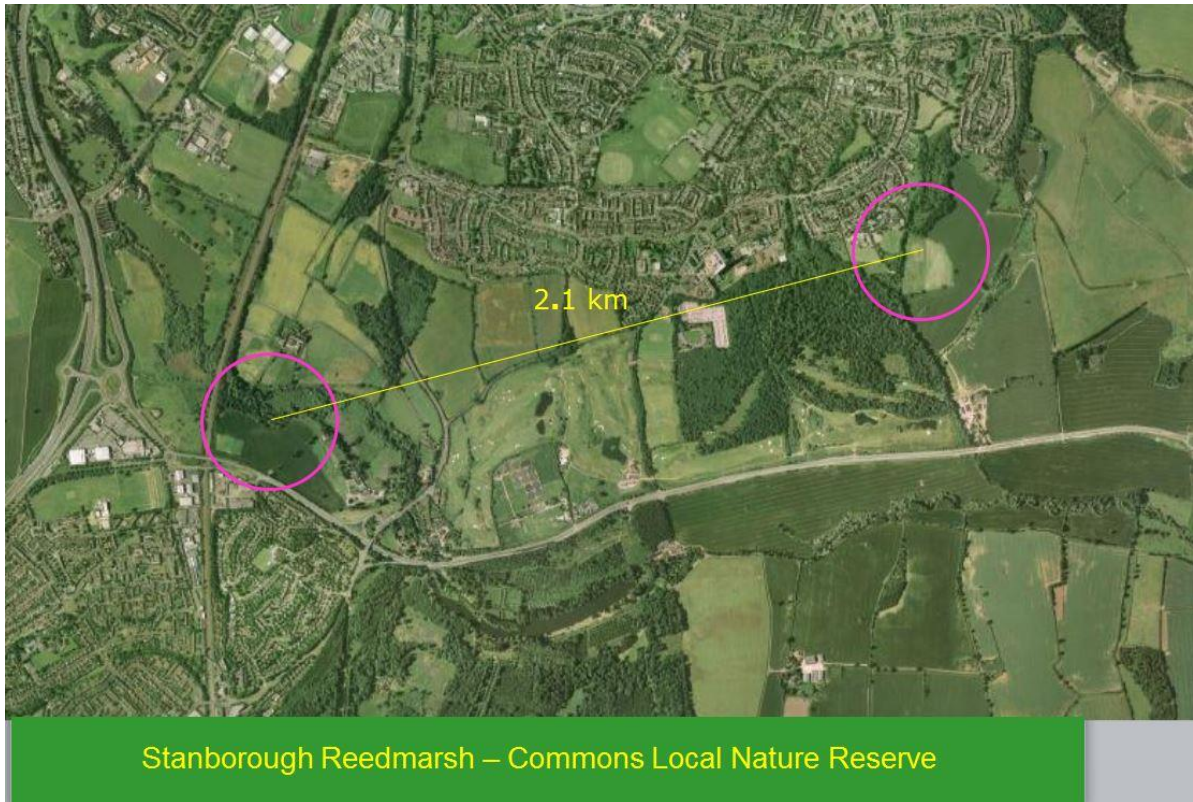
Nightingale

Case Study
Reed Bunting

Reed Bunting winter activity map within the corridor and surrounding nature reserves and arable farmland



Area of the corridor showing winter activity between roosting site at Stanborough Reed Marsh and winter foraging at The Commons Local Nature Reserve



Species data showing the recapture history of 119 new reed

buntings and the 340 recaptures of these individuals within the arable area of the Commons Local Nature Reserve showing site dependency through the winter period.

Reedbunting Recapture History

The Commons LNR

1997 - 2016

| Ring number | Age/ Typ | Capture | Date | Init | Details |
|---------------------|-----------------|----------------|-------------|-------------|--|
| Reed Bunting | | | | | |
| K954442 | N | 3F | 23/11/97 | BT | Welwyn Garden City, Hertfordshire |
| | R | 4F Recaptured | 28/12/98 | BT | Welwyn Garden City, Hertfordshire (1 yr 35days) |
| K954496 | N | 5F | 21/01/98 | BT | Welwyn Garden City, Hertfordshire |
| | R | 4F Recaptured | 27/12/03 | PM | Welwyn Garden City (WH), Hertfordshire (5 yrs 340days) |
| | R | 4F Recaptured | 31/12/03 | PO | Welwyn Garden City (WH), Hertfordshire (5 yrs 344days) |
| K954505 | N | 5F | 21/01/98 | BT | Welwyn Garden City, Hertfordshire |
| | R | 6F Recaptured | 07/02/02 | BT | Welwyn Garden City, Hertfordshire (4 yrs 17days) |
| | R | 6F Recaptured | 06/01/03 | PO | Welwyn Garden City (WH), Hertfordshire (4 yrs 350days) |
| | R | 6F Recaptured | 07/01/03 | PO | Welwyn Garden City (WH), Hertfordshire (4 yrs 351days) |
| | R | 6F Recaptured | 13/02/03 | PO | Welwyn Garden City (WH), Hertfordshire (5 yrs 23days) |
| | R | 6F Recaptured | 16/02/03 | PO | Welwyn Garden City (WH), Hertfordshire (5 yrs 26days) |
| | R | 6F Recaptured | 17/01/04 | PO | Welwyn Garden City (WH), Hertfordshire (5 yrs 361days) |
| | R | 6F Recaptured | 25/01/04 | PO | Welwyn Garden City (WH), Hertfordshire (6 yrs 4days) |
| K954875 | N | 3F | 24/11/98 | BT | Welwyn Garden City, Hertfordshire |
| | R | 6F Recaptured | 16/01/02 | BT | Welwyn Garden City, Hertfordshire (3 yrs 53days) |
| | R | 4F Recaptured | 08/11/02 | BT | Welwyn Garden City, Hertfordshire (3 yrs 349days) |
| | R | 4F Recaptured | 13/11/02 | BT | Welwyn Garden City, Hertfordshire (3 yrs 354days) |
| | R | 4F Recaptured | 18/11/02 | PO | Welwyn Garden City, Hertfordshire (3 yrs 359days) |
| | R | 6F Recaptured | 14/02/03 | PO | Welwyn Garden City (WH), Hertfordshire (4 yrs 82days) |
| K954877 | N | 3F | 24/11/98 | BT | Welwyn Garden City, Hertfordshire |
| | R | 3F Recaptured | 31/12/98 | PO | Welwyn Garden City, Hertfordshire (37 days) |

| | | | | | | |
|----------------|---|----|------------|----------|----|---|
| | R | 5F | Recaptured | 22/01/99 | BT | Welwyn Garden City, Hertfordshire (59 days) |
| K954896 | N | 3M | | 10/12/98 | BT | Welwyn Garden City, Hertfordshire |
| | R | 3M | Recaptured | 28/12/98 | BT | Welwyn Garden City, Hertfordshire (18 days) |
| K954910 | N | 3M | | 16/12/98 | BT | Welwyn Garden City, Hertfordshire |
| | R | 3M | Recaptured | 31/12/98 | BT | Welwyn Garden City, Hertfordshire (15 days) |
| K954916 | N | 4M | | 28/12/98 | BT | Welwyn Garden City, Hertfordshire |
| | R | 4M | Recaptured | 30/11/02 | BT | Welwyn Garden City, Hertfordshire (3 yrs |
| 337days) | | | | | | |
| 6 yrs 298days) | R | 4M | Recaptured | 22/10/05 | BT | Stanborough Reed Marsh, Hertfordshire (2 km, W, |
| K954948 | N | 6F | | 22/01/99 | BT | Welwyn Garden City, Hertfordshire |
| | R | 6F | Recaptured | 16/01/02 | BT | Welwyn Garden City, Hertfordshire (2 yrs |
| 359days) | | | | | | |
| 340days) | R | 4F | Recaptured | 28/12/02 | PO | Welwyn Garden City, Hertfordshire (3 yrs |
| 362days) | R | 6F | Recaptured | 19/01/03 | PO | Welwyn Garden City (WH), Hertfordshire (3 yrs |
| 14days) | R | 6F | Recaptured | 05/02/03 | PO | Welwyn Garden City (WH), Hertfordshire (4 yrs |
| 16days) | R | 6F | Recaptured | 07/02/03 | PO | Welwyn Garden City (WH), Hertfordshire (4 yrs |
| 28days) | R | 6F | Recaptured | 19/02/03 | PO | Welwyn Garden City (WH), Hertfordshire (4 yrs |
| | | | | | | |
| N568327 | N | 5F | | 12/01/02 | BT | Welwyn Garden City, Hertfordshire |
| | R | 5F | Recaptured | 07/02/02 | BT | Welwyn Garden City, Hertfordshire (26 days) |
| | R | 5F | Recaptured | 03/03/02 | BT | Welwyn Garden City, Hertfordshire (50 days) |
| | R | 4F | Recaptured | 13/11/02 | BT | Welwyn Garden City, Hertfordshire (305 days) |
| | R | 6F | Recaptured | 17/01/03 | PO | Welwyn Garden City (WH), Hertfordshire (1 yr |
| 5days) | | | | | | |
| 33days) | R | 6F | Recaptured | 14/02/03 | PO | Welwyn Garden City (WH), Hertfordshire (1 yr |
| 39days) | R | 6F | Recaptured | 20/02/03 | PO | Welwyn Garden City (WH), Hertfordshire (1 yr |
| 62days) | R | 6F | Recaptured | 15/03/03 | PM | Welwyn Garden City (HM), Hertfordshire (1 yr |
| 356days) | R | 6F | Recaptured | 03/01/04 | PO | Welwyn Garden City (WH), Hertfordshire (1 yr |
| 5days) | R | 6F | Recaptured | 17/01/04 | PO | Welwyn Garden City (WH), Hertfordshire (2 yrs |
| 289days) | R | 4F | Recaptured | 27/10/04 | PO | Welwyn Garden City (WH), Hertfordshire (2 yrs |
| 354days) | R | 4F | Recaptured | 31/12/04 | PO | Welwyn Garden City (WH), Hertfordshire (2 yrs |
| 21days) | R | 6F | Recaptured | 02/02/06 | PO | Welwyn Garden City (WH), Hertfordshire (4 yrs |
| N568328 | N | 4M | | 12/01/02 | BT | Welwyn Garden City, Hertfordshire |
| | R | 5F | Recaptured | 07/02/02 | BT | Welwyn Garden City, Hertfordshire (26 days) |
| N568329 | N | 6M | | 12/01/02 | BT | Welwyn Garden City, Hertfordshire |
| | R | 6M | Recaptured | 16/01/02 | BT | Welwyn Garden City, Hertfordshire (4 days) |
| N568332 | N | 5F | | 12/01/02 | BT | Welwyn Garden City, Hertfordshire |
| | R | 6F | Recaptured | 07/01/03 | PO | Welwyn Garden City (WH), Hertfordshire (360 |

| | | | | | | |
|-----------------|---|----|------------|----------|----|---|
| days) | R | 6F | Recaptured | 14/02/03 | PO | Welwyn Garden City (WH), Hertfordshire (1 yr |
| 33days) | R | 4F | Recaptured | 16/10/03 | PO | Welwyn Garden City (WH), Hertfordshire (1 yr |
| 277days) | R | 6F | Recaptured | 03/01/04 | PO | Welwyn Garden City (WH), Hertfordshire (1 yr |
| 356days) | R | 6F | Recaptured | 04/01/04 | PM | Welwyn Garden City (WH), Hertfordshire (1 yr |
| 357days) | R | 4F | Recaptured | 23/11/04 | PO | Stanborough Reed Marsh, Hertfordshire (2 km, W, |
| 2 yrs 316days) | R | 6F | Recaptured | 01/01/05 | PO | Welwyn Garden City (WH), Hertfordshire (2 yrs |
| 355days) | | | | | | |
| N568346 | N | 6M | | 16/01/02 | BT | Welwyn Garden City, Hertfordshire |
| | R | 6F | Recaptured | 03/03/02 | BT | Welwyn Garden City, Hertfordshire (46 days) |
| | R | 4F | Recaptured | 13/03/02 | BT | Welwyn Garden City, Hertfordshire (56 days) |
| | R | 4F | Recaptured | 13/11/02 | BT | Welwyn Garden City, Hertfordshire (301 days) |
| N568356 | N | 6F | | 07/02/02 | BT | Welwyn Garden City, Hertfordshire |
| | R | 4F | Recaptured | 08/11/02 | BT | Welwyn Garden City, Hertfordshire (274 days) |
| | R | 4F | Recaptured | 18/11/02 | PO | Welwyn Garden City, Hertfordshire (284 days) |
| | R | 6F | Recaptured | 06/01/03 | PO | Welwyn Garden City (WH), Hertfordshire (333 |
| days) | | | | | | |
| 7days) | R | 6F | Recaptured | 14/02/03 | PO | Welwyn Garden City (WH), Hertfordshire (1 yr |
| N568360 | N | 5F | | 07/02/02 | BT | Welwyn Garden City, Hertfordshire |
| | R | 5F | Recaptured | 03/03/02 | BT | Welwyn Garden City, Hertfordshire (24 days) |
| | R | 4F | Recaptured | 06/12/02 | PO | Welwyn Garden City, Hertfordshire (302 days) |
| | R | 6F | Recaptured | 24/01/03 | PO | Welwyn Garden City (WH), Hertfordshire (351 |
| days) | | | | | | |
| days) | R | 6F | Recaptured | 05/02/03 | PO | Welwyn Garden City (WH), Hertfordshire (363 |
| 6days) | R | 6F | Recaptured | 13/02/03 | PO | Welwyn Garden City (WH), Hertfordshire (1 yr |
| 25days) | R | 6F | Recaptured | 04/03/03 | PO | Welwyn Garden City (HM), Hertfordshire (1 yr |
| 349days) | R | 6F | Recaptured | 22/01/06 | PO | Welwyn Garden City (WH), Hertfordshire (3 yrs |
| N568368 | N | 6F | | 03/03/02 | BT | Welwyn Garden City, Hertfordshire |
| | R | 4F | Recaptured | 06/12/02 | PO | Welwyn Garden City, Hertfordshire (278 days) |
| | R | 4F | Recaptured | 28/12/02 | PO | Welwyn Garden City, Hertfordshire (300 days) |
| P119923 | N | 3M | | 01/10/00 | | Sugar Factory, nr Stoke Ferry, Norfolk |
| SSW, 2 yrs | C | 6M | Recaptured | 05/02/03 | BT | Welwyn Garden City (WH), Hertfordshire (97 km, |
| | | | | | | 127days) |
| SSW, 2 yrs | R | 6M | Recaptured | 16/02/03 | PO | Welwyn Garden City (WH), Hertfordshire (97 km, |
| | | | | | | 138days) |
| SSW, 2 yrs | R | 6M | Recaptured | 19/02/03 | PO | Welwyn Garden City (WH), Hertfordshire (97 km, |
| | | | | | | 141days) |
| P730028 | N | 4F | | 10/11/01 | | Rye Meads, Hertfordshire |
| W, 1 yr 89days) | C | 6F | Recaptured | 07/02/03 | PO | Welwyn Garden City (WH), Hertfordshire (13 km, |

| | | | | | | |
|--|----|------------|------------|----------|--|---|
| P913588 SSW, 2 yrs | N | 4M | | 27/05/02 | | Tewin Bury Farm, Hertfordshire |
| | C | 4M | Recaptured | 04/12/04 | PO | Welwyn Garden City (WH), Hertfordshire (6 km, 191days) |
| R133028 days) days) | N | 3 | | 22/09/02 | PO | Welwyn Garden City, Hertfordshire |
| | R | 5M | Recaptured | 04/03/03 | PO | Welwyn Garden City (HM), Hertfordshire (163 days) |
| | R | 5M | Recaptured | 16/04/03 | PO | Welwyn Garden City (WH), Hertfordshire (206 days) |
| R133035 days) days) 111days) | N | 3M | | 28/09/02 | PO | Welwyn Garden City, Hertfordshire |
| | R | 3M | Recaptured | 19/10/02 | PO | Welwyn Garden City, Hertfordshire (21 days) |
| | R | 5M | Recaptured | 05/02/03 | PO | Welwyn Garden City (WH), Hertfordshire (130 days) |
| | R | 5M | Recaptured | 14/02/03 | PO | Welwyn Garden City (WH), Hertfordshire (139 days) |
| | R | 6M | Recaptured | 17/01/04 | PM | Welwyn Garden City (WH), Hertfordshire (1 yr 111days) |
| R133057 days) days) days) 39days) 69days) 71days) 74days) 135days) | N | 3M | | 19/10/02 | PO | Welwyn Garden City, Hertfordshire |
| | R | 3M | Recaptured | 28/12/02 | PO | Welwyn Garden City, Hertfordshire (70 days) |
| | R | 5M | Recaptured | 05/02/03 | BT | Welwyn Garden City (WH), Hertfordshire (109 days) |
| | R | 4M | Recaptured | 12/10/03 | PM | Welwyn Garden City (WH), Hertfordshire (358 days) |
| | R | 4M | Recaptured | 17/10/03 | PO | Welwyn Garden City (WH), Hertfordshire (363 days) |
| | R | 4M | Recaptured | 27/11/03 | PM | Welwyn Garden City (WH), Hertfordshire (1 yr 39days) |
| | R | 4M | Recaptured | 27/12/03 | PO | Welwyn Garden City (WH), Hertfordshire (1 yr 69days) |
| | R | 4M | Recaptured | 29/12/03 | PM | Welwyn Garden City (WH), Hertfordshire (1 yr 71days) |
| | R | 6M | Recaptured | 01/01/05 | PO | Welwyn Garden City (WH), Hertfordshire (2 yrs 74days) |
| R133058 days) days) | R | 6M | Recaptured | 03/03/06 | PO | Welwyn Garden City (WH), Hertfordshire (3 yrs 135days) |
| | N | 3F | | 19/10/02 | PO | Welwyn Garden City, Hertfordshire |
| | R | 3F | Recaptured | 24/11/02 | PO | Welwyn Garden City, Hertfordshire (36 days) |
| | R | 3F | Recaptured | 09/12/02 | PO | Welwyn Garden City, Hertfordshire (51 days) |
| | R | 5F | Recaptured | 19/01/03 | PO | Welwyn Garden City (WH), Hertfordshire (92 days) |
| R133063 days) days) days) | R | 5F | Recaptured | 16/02/03 | PO | Welwyn Garden City (WH), Hertfordshire (120 days) |
| | N | 3F | | 23/10/02 | PO | Welwyn Garden City, Hertfordshire |
| | R | 3F | Recaptured | 03/11/02 | PO | Welwyn Garden City, Hertfordshire (11 days) |
| | R | 3F | Recaptured | 08/11/02 | BT | Welwyn Garden City, Hertfordshire (16 days) |
| | R | 3F | Recaptured | 30/11/02 | BT | Welwyn Garden City, Hertfordshire (38 days) |
| | R | 3F | Recaptured | 06/12/02 | PO | Welwyn Garden City, Hertfordshire (44 days) |
| | R | 5F | Recaptured | 17/01/03 | PO | Welwyn Garden City (WH), Hertfordshire (86 days) |
| | R | 5F | Recaptured | 24/01/03 | PO | Welwyn Garden City (WH), Hertfordshire (93 days) |
| | R | 5F | Recaptured | 07/02/03 | PO | Welwyn Garden City (WH), Hertfordshire (107 days) |
| R | 5F | Recaptured | 14/02/03 | PO | Welwyn Garden City (WH), Hertfordshire (114 days) | |

| | | | | | | | |
|---------------|---------|---|----|------------|----------|-----|---|
| days) | R133064 | N | 3F | | 23/10/02 | PO | Welwyn Garden City, Hertfordshire |
| | | R | 5F | Recaptured | 05/02/03 | BT | Welwyn Garden City (WH), Hertfordshire (105 |
| days) | R133067 | N | 3M | | 23/10/02 | PO | Welwyn Garden City, Hertfordshire |
| | | R | 6M | Recaptured | 07/01/03 | PO | Welwyn Garden City (WH), Hertfordshire (76 |
| days) | | R | 6M | Recaptured | 24/01/03 | PO | Welwyn Garden City (WH), Hertfordshire (93 |
| days) | | R | 6M | Recaptured | 07/02/03 | PO | Welwyn Garden City (WH), Hertfordshire (107 |
| days) | | R | 4M | Recaptured | 28/11/03 | PO | Welwyn Garden City (WH), Hertfordshire (1 yr |
| 36days) | | R | 4M | Recaptured | 23/11/04 | PM | Stanborough Reed Marsh, Hertfordshire (2 km, W, |
| 2 yrs 31days) | | | | | | | |
| | R133083 | N | 3F | | 03/11/02 | PO | Welwyn Garden City, Hertfordshire |
| | | R | 3F | Recaptured | 15/11/02 | PO | Welwyn Garden City, Hertfordshire (12 days) |
| | | R | 3F | Recaptured | 23/11/02 | BT | Welwyn Garden City, Hertfordshire (20 days) |
| | | R | 3F | Recaptured | 09/12/02 | PO | Welwyn Garden City, Hertfordshire (36 days) |
| | | R | 3F | Recaptured | 28/12/02 | PO | Welwyn Garden City, Hertfordshire (55 days) |
| | | R | 5F | Recaptured | 06/01/03 | PO | Welwyn Garden City (WH), Hertfordshire (64 |
| days) | | R | 5F | Recaptured | 18/01/03 | PO | Welwyn Garden City (WH), Hertfordshire (76 |
| days) | | R | 5F | Recaptured | 07/02/03 | PO | Welwyn Garden City (WH), Hertfordshire (96 |
| days) | | R | 5F | Recaptured | 20/02/03 | PO | Welwyn Garden City (WH), Hertfordshire (109 |
| days) | | R | 5F | Recaptured | 22/02/03 | PO | Welwyn Garden City (WH), Hertfordshire (111 |
| days) | | R | 5F | Recaptured | 25/02/03 | PO | Welwyn Garden City (WH), Hertfordshire (114 |
| days) | | R | 5F | Recaptured | 04/03/03 | PO | Welwyn Garden City (HM), Hertfordshire (121 |
| days) | | | | | | | |
| | R133108 | N | 3M | | 08/11/02 | BT | Welwyn Garden City, Hertfordshire |
| | | R | 4F | Recaptured | 11/11/02 | PO | Welwyn Garden City, Hertfordshire (3 days) |
| | | R | 3M | Recaptured | 24/11/02 | PO | Welwyn Garden City, Hertfordshire (16 days) |
| | | R | 3M | Recaptured | 09/12/02 | PO | Welwyn Garden City, Hertfordshire (31 days) |
| | | R | 5M | Recaptured | 18/01/03 | PO | Welwyn Garden City (WH), Hertfordshire (71 |
| days) | | R | 5M | Recaptured | 14/02/03 | PO | Welwyn Garden City (WH), Hertfordshire (98 |
| days) | | C | 5M | Recaptured | 25/05/03 | RCC | Tewin Bury Farm, Hertfordshire (6 km, NNE, 198 |
| days) | | R | 4M | Recaptured | 12/11/03 | PO | Welwyn Garden City (WH), Hertfordshire (1 yr |
| 4days) | | R | 4M | Recaptured | 29/12/03 | PO | Welwyn Garden City (WH), Hertfordshire (1 yr |
| 51days) | | R | 4M | Recaptured | 31/12/03 | PO | Welwyn Garden City (WH), Hertfordshire (1 yr |
| 53days) | | | | | | | |
| | R133144 | N | 4M | | 11/11/02 | PO | Welwyn Garden City, Hertfordshire |
| | | R | 4M | Recaptured | 18/11/02 | PO | Welwyn Garden City, Hertfordshire (7 days) |
| | R133147 | N | 3M | | 12/11/02 | PO | Welwyn Garden City, Hertfordshire |

| | | | | | | |
|---------|---|----|------------|----------|----|---|
| days) | R | 5M | Recaptured | 18/01/03 | PO | Welwyn Garden City (WH), Hertfordshire (67 |
| 24days) | R | 4M | Recaptured | 06/12/03 | PO | Welwyn Garden City (WH), Hertfordshire (1 yr |
| 51days) | R | 6M | Recaptured | 02/01/04 | PO | Welwyn Garden City (WH), Hertfordshire (1 yr |
| 66days) | R | 6M | Recaptured | 17/01/04 | PM | Welwyn Garden City (WH), Hertfordshire (1 yr |
| 79days) | R | 6M | Recaptured | 30/01/05 | GR | Welwyn Garden City (WH), Hertfordshire (2 yrs |
| R133168 | N | 3M | | 12/11/02 | PO | Welwyn Garden City, Hertfordshire |
| days) | R | 5M | Recaptured | 08/01/03 | PO | Welwyn Garden City (WH), Hertfordshire (57 |
| R133188 | N | 4M | | 13/11/02 | BT | Welwyn Garden City, Hertfordshire |
| days) | R | 6M | Recaptured | 07/02/03 | PO | Welwyn Garden City (WH), Hertfordshire (86 |
| days) | R | 6M | Recaptured | 20/02/03 | PO | Welwyn Garden City (WH), Hertfordshire (99 |
| days) | R | 4M | Recaptured | 08/11/03 | PM | Welwyn Garden City (WH), Hertfordshire (360 |
| R133189 | N | 3F | | 13/11/02 | BT | Welwyn Garden City, Hertfordshire |
| days) | R | 3F | Recaptured | 23/11/02 | BT | Welwyn Garden City, Hertfordshire (10 days) |
| days) | R | 3F | Recaptured | 09/12/02 | PO | Welwyn Garden City, Hertfordshire (26 days) |
| days) | R | 5F | Recaptured | 07/01/03 | PO | Welwyn Garden City (WH), Hertfordshire (55 |
| days) | R | 5F | Recaptured | 07/01/03 | PO | Welwyn Garden City (WH), Hertfordshire (55 |
| days) | R | 5F | Recaptured | 07/02/03 | PO | Welwyn Garden City (WH), Hertfordshire (86 |
| days) | R | 5F | Recaptured | 16/02/03 | PO | Welwyn Garden City (WH), Hertfordshire (95 |
| days) | R | 4F | Recaptured | 08/11/03 | BT | Welwyn Garden City (WH), Hertfordshire (360 |
| days) | R | 4F | Recaptured | 12/11/03 | PO | Welwyn Garden City (WH), Hertfordshire (364 |
| 15days) | R | 4F | Recaptured | 28/11/03 | PO | Welwyn Garden City (WH), Hertfordshire (1 yr |
| 23days) | R | 4F | Recaptured | 06/12/03 | BT | Welwyn Garden City (WH), Hertfordshire (1 yr |
| R133190 | N | 3F | | 13/11/02 | BT | Welwyn Garden City, Hertfordshire |
| days) | R | 5F | Recaptured | 04/03/03 | PO | Welwyn Garden City (HM), Hertfordshire (111 |
| R133195 | N | 4F | | 13/11/02 | BT | Welwyn Garden City, Hertfordshire |
| days) | R | 3F | Recaptured | 09/12/02 | PO | Welwyn Garden City, Hertfordshire (26 days) |
| days) | R | 6F | Recaptured | 07/02/03 | PO | Welwyn Garden City (WH), Hertfordshire (86 |
| days) | R | 4F | Recaptured | 13/02/03 | PO | Welwyn Garden City (WH), Hertfordshire (92 |

| | | | | | | |
|---------|---|----|------------|----------|----|--|
| R133202 | N | 3F | | 17/11/02 | PO | Welwyn Garden City, Hertfordshire |
| | R | 3F | Recaptured | 18/11/02 | PO | Welwyn Garden City, Hertfordshire (1 day) |
| | R | 3F | Recaptured | 07/12/02 | PO | Welwyn Garden City, Hertfordshire (20 days) |
| | R | 5F | Recaptured | 06/01/03 | PO | Welwyn Garden City (WH), Hertfordshire (50 days) |
| | R | 5F | Recaptured | 19/01/03 | PO | Welwyn Garden City (WH), Hertfordshire (63 days) |
| | R | 5F | Recaptured | 24/01/03 | PO | Welwyn Garden City (WH), Hertfordshire (68 days) |
| | R | 4F | Recaptured | 14/02/03 | PO | Welwyn Garden City (WH), Hertfordshire (89 days) |
| | R | 5F | Recaptured | 16/02/03 | PO | Welwyn Garden City (WH), Hertfordshire (91 days) |
| | R | 5F | Recaptured | 20/02/03 | PO | Welwyn Garden City (WH), Hertfordshire (95 days) |
| | R | 4F | Recaptured | 08/11/03 | BT | Welwyn Garden City (WH), Hertfordshire (356 days) |
| | R | 4F | Recaptured | 27/12/03 | PM | Welwyn Garden City (WH), Hertfordshire (1 yr 40days) |
| | R | 4F | Recaptured | 29/12/03 | PO | Welwyn Garden City (WH), Hertfordshire (1 yr 42days) |
| | R | 6F | Recaptured | 03/01/04 | PO | Welwyn Garden City (WH), Hertfordshire (1 yr 47days) |
| | R | 6F | Recaptured | 25/01/04 | PO | Welwyn Garden City (WH), Hertfordshire (1 yr 69days) |
| R133208 | N | 3F | | 18/11/02 | PO | Welwyn Garden City, Hertfordshire |
| | R | 5F | Recaptured | 05/02/03 | BT | Welwyn Garden City (WH), Hertfordshire (79 days) |
| | R | 5F | Recaptured | 14/02/03 | PO | Welwyn Garden City (WH), Hertfordshire (88 days) |
| R133209 | N | 3F | | 18/11/02 | PO | Welwyn Garden City, Hertfordshire |
| | R | 3F | Recaptured | 09/12/02 | PO | Welwyn Garden City, Hertfordshire (21 days) |
| R133212 | N | 3F | | 18/11/02 | PO | Welwyn Garden City, Hertfordshire |
| | R | 3F | Recaptured | 24/11/02 | PO | Welwyn Garden City, Hertfordshire (6 days) |
| | R | 5F | Recaptured | 07/01/03 | PO | Welwyn Garden City (WH), Hertfordshire (50 days) |
| R133219 | N | 4F | | 23/11/02 | BT | Welwyn Garden City, Hertfordshire |
| | R | 5F | Recaptured | 06/01/03 | PO | Welwyn Garden City (WH), Hertfordshire (44 days) |
| | R | 5F | Recaptured | 24/01/03 | PO | Welwyn Garden City (WH), Hertfordshire (62 days) |
| | R | 5F | Recaptured | 05/02/03 | PO | Welwyn Garden City (WH), Hertfordshire (74 days) |
| | R | 5F | Recaptured | 19/02/03 | PO | Welwyn Garden City (WH), Hertfordshire (88 days) |
| R133221 | N | 3F | | 23/11/02 | BT | Welwyn Garden City, Hertfordshire |
| | R | 3F | Recaptured | 30/11/02 | BT | Welwyn Garden City, Hertfordshire (7 days) |
| | R | 5F | Recaptured | 16/02/03 | PO | Welwyn Garden City (WH), Hertfordshire (85 days) |
| | R | 6F | Recaptured | 02/01/04 | PO | Welwyn Garden City (WH), Hertfordshire (1 yr 40days) |

| | | | | | |
|---------|---|---------------|----------|----|---|
| R133269 | N | 3F | 08/12/02 | PO | Welwyn Garden City, Hertfordshire |
| | R | 3F Recaptured | 28/12/02 | PO | Welwyn Garden City, Hertfordshire (20 days) |
| | R | 5F Recaptured | 24/01/03 | PO | Welwyn Garden City (WH), Hertfordshire (47 days) |
| | R | 5F Recaptured | 14/02/03 | PO | Welwyn Garden City (WH), Hertfordshire (68 days) |
| | R | 5F Recaptured | 17/04/03 | PO | Welwyn Garden City (WH), Hertfordshire (130 days) |
| R133275 | N | 3M | 09/12/02 | PO | Welwyn Garden City, Hertfordshire |
| | R | 5M Recaptured | 05/02/03 | BT | Welwyn Garden City (WH), Hertfordshire (58 days) |
| | R | 5M Recaptured | 07/02/03 | PO | Welwyn Garden City (WH), Hertfordshire (60 days) |
| | R | 5M Recaptured | 16/02/03 | PO | Welwyn Garden City (WH), Hertfordshire (69 days) |
| | R | 5M Recaptured | 20/02/03 | PO | Welwyn Garden City (WH), Hertfordshire (73 days) |
| | R | 4M Recaptured | 12/11/03 | BT | Welwyn Garden City (WH), Hertfordshire (338 days) |
| | R | 6M Recaptured | 03/01/04 | PO | Welwyn Garden City (WH), Hertfordshire (1 yr 25days) |
| R133282 | N | 3M | 09/12/02 | PO | Welwyn Garden City, Hertfordshire |
| | R | 3M Recaptured | 28/12/02 | PO | Welwyn Garden City, Hertfordshire (19 days) |
| | R | 5M Recaptured | 06/01/03 | PO | Welwyn Garden City (WH), Hertfordshire (28 days) |
| | R | 5M Recaptured | 07/01/03 | PO | Welwyn Garden City (WH), Hertfordshire (29 days) |
| | R | 5M Recaptured | 08/01/03 | PO | Welwyn Garden City (WH), Hertfordshire (30 days) |
| | R | 5M Recaptured | 19/01/03 | PO | Welwyn Garden City (WH), Hertfordshire (41 days) |
| R133297 | N | 3F | 28/12/02 | PO | Welwyn Garden City, Hertfordshire |
| | R | 5F Recaptured | 08/02/03 | BT | Welwyn Garden City (WH), Hertfordshire (42 days) |
| | R | 4F Recaptured | 10/12/04 | PM | Welwyn Garden City (WH), Hertfordshire (1 yr 348days) |
| | R | 4F Recaptured | 31/12/04 | PO | Welwyn Garden City (WH), Hertfordshire (2 yrs 3days) |
| R133307 | N | 2F | 28/12/02 | PO | Welwyn Garden City, Hertfordshire |
| | R | 6F Recaptured | 19/01/03 | PO | Welwyn Garden City (WH), Hertfordshire (22 days) |
| | R | 6F Recaptured | 19/02/03 | PO | Welwyn Garden City (WH), Hertfordshire (53 days) |
| | R | 6F Recaptured | 22/02/03 | PO | Welwyn Garden City (WH), Hertfordshire (56 days) |
| | R | 4F Recaptured | 11/10/03 | BT | Welwyn Garden City (WH), Hertfordshire (287 days) |
| | R | 4F Recaptured | 08/11/03 | PO | Welwyn Garden City (WH), Hertfordshire (315 days) |
| R133322 | N | 5F | 06/01/03 | PO | Welwyn Garden City (WH), Hertfordshire |
| | R | 5F Recaptured | 07/01/03 | PO | Welwyn Garden City (WH), Hertfordshire (1 day) |
| | R | 5F Recaptured | 05/02/03 | BT | Welwyn Garden City (WH), Hertfordshire (30 days) |

| | | | | | | |
|----------|---|----|------------|----------|----|---|
| days) | R | 4F | Recaptured | 14/02/03 | PO | Welwyn Garden City (WH), Hertfordshire (39 |
| days) | R | 5F | Recaptured | 16/02/03 | PO | Welwyn Garden City (WH), Hertfordshire (41 |
| days) | R | 5 | Recaptured | 19/02/03 | PO | Welwyn Garden City (WH), Hertfordshire (44 |
| days) | R | 5F | Recaptured | 20/02/03 | PO | Welwyn Garden City (WH), Hertfordshire (45 |
| days) | R | 5F | Recaptured | 22/02/03 | PO | Welwyn Garden City (WH), Hertfordshire (47 |
| R133324 | N | 5F | | 07/01/03 | PO | Welwyn Garden City (WH), Hertfordshire |
| days) | R | 4F | Recaptured | 12/11/03 | BT | Welwyn Garden City (WH), Hertfordshire (309 |
| days) | R | 4F | Recaptured | 28/11/03 | PO | Welwyn Garden City (WH), Hertfordshire (325 |
| days) | R | 6F | Recaptured | 03/01/04 | PO | Welwyn Garden City (WH), Hertfordshire (361 |
| 360days) | R | 6F | Recaptured | 01/01/05 | PO | Welwyn Garden City (WH), Hertfordshire (1 yr |
| 331days) | R | 4F | Recaptured | 04/12/05 | PM | Welwyn Garden City (WH), Hertfordshire (2 yrs |
| 64days) | R | 6F | Recaptured | 12/03/06 | PO | Welwyn Garden City (WH), Hertfordshire (3 yrs |
| R133333 | N | 5M | | 17/01/03 | PO | Welwyn Garden City (WH), Hertfordshire |
| | R | 5M | Recaptured | 18/01/03 | PO | Welwyn Garden City (WH), Hertfordshire (1 day) |
| | R | 5M | Recaptured | 24/01/03 | PO | Welwyn Garden City (WH), Hertfordshire (7 days) |
| days) | R | 5M | Recaptured | 07/02/03 | PO | Welwyn Garden City (WH), Hertfordshire (21 |
| R133353 | N | 4F | | 19/01/03 | PO | Welwyn Garden City (WH), Hertfordshire |
| days) | R | 5F | Recaptured | 08/02/03 | PM | Welwyn Garden City (WH), Hertfordshire (20 |
| days) | R | 5F | Recaptured | 14/02/03 | PO | Welwyn Garden City (WH), Hertfordshire (26 |
| days) | R | 4F | Recaptured | 03/10/03 | PM | Welwyn Garden City (WH), Hertfordshire (257 |
| days) | R | 4F | Recaptured | 08/11/03 | BT | Welwyn Garden City (WH), Hertfordshire (293 |
| R133395 | N | 5F | | 05/02/03 | PO | Welwyn Garden City (WH), Hertfordshire |
| days) | R | 6F | Recaptured | 17/01/04 | PM | Welwyn Garden City (WH), Hertfordshire (346 |
| R133396 | N | 6F | | 05/02/03 | PO | Welwyn Garden City (WH), Hertfordshire |
| | R | 6F | Recaptured | 05/02/03 | PO | Welwyn Garden City (WH), Hertfordshire (0 days) |
| days) | R | 6F | Recaptured | 19/02/03 | PO | Welwyn Garden City (WH), Hertfordshire (14 |
| R133398 | N | 5M | | 05/02/03 | PO | Welwyn Garden City (WH), Hertfordshire |
| days) | R | 5M | Recaptured | 22/02/03 | PO | Welwyn Garden City (WH), Hertfordshire (17 |
| R133399 | N | 5M | | 05/02/03 | BT | Welwyn Garden City (WH), Hertfordshire |
| | R | 5M | Recaptured | 05/02/03 | BT | Welwyn Garden City (WH), Hertfordshire (0 days) |
| | R | 5M | Recaptured | 07/02/03 | PO | Welwyn Garden City (WH), Hertfordshire (2 days) |
| R133400 | N | 5F | | 05/02/03 | BT | Welwyn Garden City (WH), Hertfordshire |
| days) | R | 4F | Recaptured | 29/12/03 | PO | Welwyn Garden City (WH), Hertfordshire (327 |

| | | | | | | |
|---------------|---|----|------------|----------|----|---|
| | R | 6F | Recaptured | 02/01/04 | PO | Welwyn Garden City (WH), Hertfordshire (331 |
| days) | | | | | | |
| R133411 | N | 5M | | 05/02/03 | BT | Welwyn Garden City (WH), Hertfordshire |
| | R | 5M | Recaptured | 14/02/03 | PO | Welwyn Garden City (WH), Hertfordshire (9 days) |
| | C | 6M | Recaptured | 20/01/04 | BT | Lemsford Village (CHF), Hertfordshire (6 km, |
| NW, 349 days) | | | | | | |
| R133415 | N | 6M | | 05/02/03 | PO | Welwyn Garden City (WH), Hertfordshire |
| | R | 4M | Recaptured | 16/02/03 | PO | Welwyn Garden City (WH), Hertfordshire (11 |
| days) | | | | | | |
| R133416 | N | 6M | | 05/02/03 | BT | Welwyn Garden City (WH), Hertfordshire |
| | R | 6M | Recaptured | 16/02/03 | PO | Welwyn Garden City (WH), Hertfordshire (11 |
| days) | | | | | | |
| R133421 | N | 6M | | 07/02/03 | PO | Welwyn Garden City (WH), Hertfordshire |
| | R | 6M | Recaptured | 08/02/03 | PM | Welwyn Garden City (WH), Hertfordshire (1 day) |
| | R | 6M | Recaptured | 22/02/03 | PO | Welwyn Garden City (WH), Hertfordshire (15 |
| days) | | | | | | |
| R133423 | N | 5M | | 07/02/03 | PO | Welwyn Garden City (WH), Hertfordshire |
| | R | 4M | Recaptured | 27/12/03 | PO | Welwyn Garden City (WH), Hertfordshire (323 |
| days) | | | | | | |
| | R | 4M | Recaptured | 02/01/04 | PO | Welwyn Garden City (WH), Hertfordshire (329 |
| days) | | | | | | |
| | R | 6M | Recaptured | 03/01/04 | PO | Welwyn Garden City (WH), Hertfordshire (330 |
| days) | | | | | | |
| | R | 6M | Recaptured | 15/04/05 | PM | Stanborough Reed Marsh, Hertfordshire (2 km, W, |
| 2 yrs 67days) | | | | | | |
| R133428 | N | 6M | | 08/02/03 | PM | Welwyn Garden City (WH), Hertfordshire |
| | R | 6M | Recaptured | 14/02/03 | PO | Welwyn Garden City (WH), Hertfordshire (6 days) |
| R133763 | N | 3M | | 11/10/03 | PO | Welwyn Garden City (WH), Hertfordshire |
| | R | 3M | Recaptured | 27/12/03 | PO | Welwyn Garden City (WH), Hertfordshire (77 |
| days) | | | | | | |
| | R | 6M | Recaptured | 22/01/05 | PO | Welwyn Garden City (WH), Hertfordshire (1 yr |
| 103days) | | | | | | |
| R133766 | N | 3M | | 11/10/03 | BT | Welwyn Garden City (WH), Hertfordshire |
| | R | 3M | Recaptured | 12/11/03 | BT | Welwyn Garden City (WH), Hertfordshire (32 |
| days) | | | | | | |
| | R | 5M | Recaptured | 09/05/04 | PM | Welwyn Garden City (BFF), Hertfordshire (211 |
| days) | | | | | | |
| | R | 4M | Recaptured | 16/10/04 | SK | Welwyn Garden City (WH), Hertfordshire (1 yr |
| 5days) | | | | | | |
| R133777 | N | 3M | | 12/10/03 | PO | Welwyn Garden City (WH), Hertfordshire |
| | R | 3M | Recaptured | 12/11/03 | BT | Welwyn Garden City (WH), Hertfordshire (31 |
| days) | | | | | | |
| R133780 | N | 4M | | 12/10/03 | PO | Welwyn Garden City (WH), Hertfordshire |
| | R | 4M | Recaptured | 08/11/03 | BT | Welwyn Garden City (WH), Hertfordshire (27 |
| days) | | | | | | |
| | R | 6M | Recaptured | 25/01/04 | PM | Welwyn Garden City (WH), Hertfordshire (105 |
| days) | | | | | | |
| | R | 4M | Recaptured | 30/11/04 | PO | Welwyn Garden City (WH), Hertfordshire (1 yr |
| 49days) | | | | | | |
| R133821 | N | 3M | | 16/10/03 | PO | Welwyn Garden City (WH), Hertfordshire |
| | R | 3M | Recaptured | 08/11/03 | PM | Welwyn Garden City (WH), Hertfordshire (23 |
| days) | | | | | | |

| | | | | | | |
|----------------|---|----|------------|----------|----|--|
| days) | R | 5M | Recaptured | 03/01/04 | PO | Welwyn Garden City (WH), Hertfordshire (79 |
| 109days) | R | 6M | Recaptured | 02/02/06 | PO | Welwyn Garden City (WH), Hertfordshire (2 yrs |
| 92days) | R | 6M | Recaptured | 16/01/09 | PO | Welwyn Garden City (WH), Hertfordshire (5 yrs |
| R133822 | N | 4F | | 16/10/03 | PO | Welwyn Garden City (WH), Hertfordshire |
| | R | 4F | Recaptured | 23/10/03 | PO | Welwyn Garden City (WH), Hertfordshire (7 days) |
| days) | R | 4F | Recaptured | 27/12/03 | PO | Welwyn Garden City (WH), Hertfordshire (72 |
| days) | R | 6F | Recaptured | 02/01/04 | PO | Welwyn Garden City (WH), Hertfordshire (78 |
| 28days) | R | 4F | Recaptured | 13/11/04 | MF | Welwyn Garden City (WH), Hertfordshire (1 yr |
| 55days) | R | 4F | Recaptured | 10/12/04 | PO | Welwyn Garden City (WH), Hertfordshire (1 yr |
| 77days) | R | 4F | Recaptured | 01/01/05 | PO | Welwyn Garden City (WH), Hertfordshire (1 yr |
| 91days) | R | 6F | Recaptured | 15/01/05 | PO | Welwyn Garden City (WH), Hertfordshire (1 yr |
| R133996 | N | 3F | | 12/11/03 | PO | Welwyn Garden City (WH), Hertfordshire |
| days) | R | 3F | Recaptured | 27/11/03 | PM | Welwyn Garden City (WH), Hertfordshire (15 |
| days) | R | 3F | Recaptured | 27/12/03 | PM | Welwyn Garden City (WH), Hertfordshire (45 |
| days) | R | 5F | Recaptured | 03/01/04 | PO | Welwyn Garden City (WH), Hertfordshire (52 |
| 1 yr 11days) | R | 4F | Recaptured | 23/11/04 | PO | Stanborough Reed Marsh, Hertfordshire (2 km, W, |
| 15days) | R | 4F | Recaptured | 27/11/04 | PO | Welwyn Garden City (WH), Hertfordshire (1 yr |
| 114days) | R | 6F | Recaptured | 06/03/05 | GR | Welwyn Garden City (HM), Hertfordshire (1 yr |
| R133997 | N | 4F | | 12/11/03 | BT | Welwyn Garden City (WH), Hertfordshire |
| days) | R | 4F | Recaptured | 06/12/03 | PM | Welwyn Garden City (WH), Hertfordshire (24 |
| 1 yr 11days) | R | 4F | Recaptured | 23/11/04 | BT | Stanborough Reed Marsh, Hertfordshire (2 km, W, |
| R133998 | N | 4M | | 12/11/03 | BT | Welwyn Garden City (WH), Hertfordshire |
| days) | R | 2M | Recaptured | 28/11/03 | PO | Welwyn Garden City (WH), Hertfordshire (16 |
| R134000 | N | 3F | | 12/11/03 | PO | Welwyn Garden City (WH), Hertfordshire |
| days) | R | 5F | Recaptured | 03/01/04 | PO | Welwyn Garden City (WH), Hertfordshire (52 |
| R690265 | N | 4M | | 31/12/03 | BT | Lemsford Village (CHF), Hertfordshire |
| | R | 6M | Recaptured | 05/01/04 | BT | Lemsford Village (CHF), Hertfordshire (5 days) |
| SE, 1 yr 1day) | C | 6M | Recaptured | 01/01/05 | PO | Welwyn Garden City (WH), Hertfordshire (6 km, |
| R690843 | N | 3M | | 23/11/04 | PO | Stanborough Reed Marsh, Hertfordshire |
| E, 7 days) | R | 2 | Recaptured | 30/11/04 | PO | Welwyn Garden City (WH), Hertfordshire (2 km, |
| E, 34 days) | R | 3M | Recaptured | 27/12/04 | PO | Welwyn Garden City (WH), Hertfordshire (2 km, |
| | R | 4M | Recaptured | 12/11/05 | BT | Stanborough Reed Marsh, Hertfordshire (354 days) |

| | | | | | | |
|---------------------|----------------|------------|-------------|-------------|----------------|--|
| E, 1 yr 67days) | R | 6M | Recaptured | 29/01/06 | PO | Welwyn Garden City (WH), Hertfordshire (2 km, |
| R690853 | N | 2M | | 23/11/04 | PO | Stanborough Reed Marsh, Hertfordshire |
| E, 15 days) | R | 3M | Recaptured | 08/12/04 | PO | Welwyn Garden City (HM), Hertfordshire (2 km, |
| R690855 | N | 3M | | 23/11/04 | PO | Stanborough Reed Marsh, Hertfordshire |
| E, 17 days) | R | 3M | Recaptured | 10/12/04 | PM | Welwyn Garden City (WH), Hertfordshire (2 km, |
| R690861 | N | 4M | | 23/11/04 | PM | Stanborough Reed Marsh, Hertfordshire |
| E, 17 days) | R | 4M | Recaptured | 10/12/04 | PM | Welwyn Garden City (WH), Hertfordshire (2 km, |
| E, 60 days) | R | 6M | Recaptured | 22/01/05 | PO | Welwyn Garden City (WH), Hertfordshire (2 km, |
| / | R | 6M | Recaptured | 15/04/05 | PM | Stanborough Reed Marsh, Hertfordshire (143 days) |
| number | Capture | Typ | Date | Init | Details | |
| Reed Bunting | | | | | | |
| R690862 | N | 3F | | 23/11/04 | PM | Stanborough Reed Marsh, Hertfordshire |
| E, 8 days) | R | 3F | Recaptured | 01/12/04 | PO | Welwyn Garden City (WH), Hertfordshire (2 km, |
| R690917 | N | 4M | | 02/12/04 | PO | Stanborough Reed Marsh, Hertfordshire |
| E, 9 days) | R | 4M | Recaptured | 11/12/04 | PO | Welwyn Garden City (WH), Hertfordshire (2 km, |
| E, 29 days) | R | 2M | Recaptured | 31/12/04 | PM | Welwyn Garden City (WH), Hertfordshire (2 km, |
| | R | 4M | Recaptured | 17/02/05 | PM | Stanborough Reed Marsh, Hertfordshire (77 days) |
| | R | 6M | Recaptured | 08/06/05 | BT | Stanborough Reed Marsh, Hertfordshire (188 days) |
| R691016 | N | 3F | | 06/12/03 | PO | Welwyn Garden City (WH), Hertfordshire |
| days) | R | 3F | Recaptured | 29/12/03 | BT | Welwyn Garden City (WH), Hertfordshire (23 |
| days) | R | 4F | Recaptured | 13/11/04 | SK | Welwyn Garden City (WH), Hertfordshire (343 |
| R691038 | N | 4M | | 27/12/03 | PM | Welwyn Garden City (WH), Hertfordshire |
| | R | 4M | Recaptured | 29/12/03 | PO | Welwyn Garden City (WH), Hertfordshire (2 days) |
| | R | 6M | Recaptured | 02/01/04 | PO | Welwyn Garden City (WH), Hertfordshire (6 days) |
| | R | 6M | Recaptured | 03/01/04 | PO | Welwyn Garden City (WH), Hertfordshire (7 days) |
| R691053 | N | 4F | | 29/12/03 | PM | Welwyn Garden City (WH), Hertfordshire |
| days) | R | 6F | Recaptured | 17/01/04 | PM | Welwyn Garden City (WH), Hertfordshire (19 |
| R691057 | N | 4F | | 29/12/03 | PM | Welwyn Garden City (WH), Hertfordshire |
| | R | 4F | Recaptured | 31/12/03 | PO | Welwyn Garden City (WH), Hertfordshire (2 days) |
| R691061 | N | 4F | | 31/12/03 | PO | Welwyn Garden City (WH), Hertfordshire |
| | R | 6F | Recaptured | 02/01/04 | PO | Welwyn Garden City (WH), Hertfordshire (2 days) |
| | R | 4F | Recaptured | 03/01/04 | PO | Welwyn Garden City (WH), Hertfordshire (3 days) |
| days) | R | 6F | Recaptured | 17/01/04 | PM | Welwyn Garden City (WH), Hertfordshire (17 |
| R691064 | N | 6M | | 02/01/04 | PO | Welwyn Garden City (WH), Hertfordshire |
| | R | 6M | Recaptured | 03/01/04 | PO | Welwyn Garden City (WH), Hertfordshire (1 day) |
| 14days) | R | 6M | Recaptured | 16/01/05 | PM | Welwyn Garden City (WH), Hertfordshire (1 yr |
| 20days) | R | 6M | Recaptured | 22/01/05 | PO | Welwyn Garden City (WH), Hertfordshire (1 yr |

| | | | | | | |
|---------|---|----|------------|----------|----|---|
| R691114 | N | 4F | | 04/04/04 | PO | Welwyn Garden City (BFF), Hertfordshire |
| days) | R | 5F | Recaptured | 24/04/04 | PO | Welwyn Garden City (BFF), Hertfordshire (20 |
| R691721 | N | 3F | | 31/10/04 | MF | Welwyn Garden City (WH), Hertfordshire |
| days) | R | 3F | Recaptured | 04/12/04 | PO | Welwyn Garden City (WH), Hertfordshire (34 |
| days) | R | 5F | Recaptured | 15/01/05 | BT | Welwyn Garden City (WH), Hertfordshire (76 |
| R691769 | N | 3M | | 13/11/04 | PM | Welwyn Garden City (HM), Hertfordshire |
| days) | R | 2M | Recaptured | 26/12/04 | PO | Welwyn Garden City (WH), Hertfordshire (43 |
| days) | R | 5M | Recaptured | 15/01/05 | PO | Welwyn Garden City (WH), Hertfordshire (63 |
| R691807 | N | 3M | | 20/11/04 | PO | Welwyn Garden City (WH), Hertfordshire |
| 3 days) | R | 3M | Recaptured | 23/11/04 | PO | Stanborough Reed Marsh, Hertfordshire (2 km, W, |
| days) | R | 3M | Recaptured | 29/11/04 | PO | Welwyn Garden City (WH), Hertfordshire (9 days) |
| | R | 3M | Recaptured | 04/12/04 | MF | Welwyn Garden City (WH), Hertfordshire (14 |
| R691808 | N | 3M | | 20/11/04 | PO | Welwyn Garden City (WH), Hertfordshire |
| days) | R | 3M | Recaptured | 04/12/04 | PO | Welwyn Garden City (WH), Hertfordshire (14 |
| days) | R | 3M | Recaptured | 31/12/04 | PM | Welwyn Garden City (WH), Hertfordshire (41 |
| days) | R | 5M | Recaptured | 22/01/05 | MF | Welwyn Garden City (WH), Hertfordshire (63 |
| R691809 | N | 4F | | 20/11/04 | BT | Welwyn Garden City (WH), Hertfordshire |
| days) | R | 4F | Recaptured | 26/12/04 | PM | Welwyn Garden City (WH), Hertfordshire (36 |
| R691837 | N | 4F | | 27/11/04 | SK | Welwyn Garden City (WH), Hertfordshire |
| days) | R | 4F | Recaptured | 04/12/04 | PO | Welwyn Garden City (WH), Hertfordshire (7 days) |
| days) | R | 4F | Recaptured | 11/12/04 | PO | Welwyn Garden City (WH), Hertfordshire (14 |
| days) | R | 4F | Recaptured | 26/12/04 | PO | Welwyn Garden City (WH), Hertfordshire (29 |
| days) | R | 4F | Recaptured | 01/01/05 | PO | Welwyn Garden City (WH), Hertfordshire (35 |
| days) | R | 6F | Recaptured | 16/01/05 | PO | Welwyn Garden City (WH), Hertfordshire (50 |
| R691840 | N | 4M | | 27/11/04 | PM | Welwyn Garden City (WH), Hertfordshire |
| days) | R | 4M | Recaptured | 31/12/04 | PM | Welwyn Garden City (WH), Hertfordshire (34 |
| 63days) | R | 6M | Recaptured | 29/01/06 | PO | Welwyn Garden City (WH), Hertfordshire (1 yr |
| R691841 | N | 3F | | 27/11/04 | PO | Welwyn Garden City (WH), Hertfordshire |
| days) | R | 3F | Recaptured | 31/12/04 | PM | Welwyn Garden City (WH), Hertfordshire (34 |
| days) | R | 5F | Recaptured | 01/01/05 | PO | Welwyn Garden City (WH), Hertfordshire (35 |
| R691848 | N | 3F | | 30/11/04 | PO | Welwyn Garden City (WH), Hertfordshire |
| | R | 4F | Recaptured | 05/11/05 | PO | Welwyn Garden City (WH), Hertfordshire (340 |

days)

| | | | | | | |
|---------|---|----|------------|----------|----|--|
| R691926 | N | 3M | | 31/12/04 | PO | Welwyn Garden City (WH), Hertfordshire |
| | R | 5M | Recaptured | 23/01/05 | GR | Welwyn Garden City (WH), Hertfordshire (23 |

days)

| | | | | | | |
|---------|---|----|------------|----------|----|---|
| R692246 | N | 6M | | 10/05/05 | BT | Stanborough Reed Marsh, Hertfordshire |
| | R | 6M | Recaptured | 23/01/09 | PO | Welwyn Garden City (WH), Hertfordshire (2 km, |

E, 3 yrs 258days)

| | | | | | | |
|---------|---|----|------------|----------|----|---|
| R692728 | N | 3M | | 12/11/05 | BT | Stanborough Reed Marsh, Hertfordshire |
| | R | 6M | Recaptured | 08/02/09 | PM | Welwyn Garden City (WH), Hertfordshire (2 km, |

E, 3 yrs 88days)

| | | | | | | |
|---------|---|----|------------|----------|----|---|
| R692845 | N | 6F | | 04/01/06 | SK | Stanborough Reed Marsh, Hertfordshire |
| | R | 6F | Recaptured | 02/02/06 | PM | Welwyn Garden City (WH), Hertfordshire (2 km, |

E, 29 days)

| | | | | | | |
|--|---|----|------------|----------|----|---|
| | R | 6F | Recaptured | 02/02/06 | PO | Welwyn Garden City (WH), Hertfordshire (2 km, |
|--|---|----|------------|----------|----|---|

E, 29 days)

| | | | | | | |
|--|---|---|------------|----------|----|--|
| | R | 4 | Recaptured | 23/12/06 | SK | Stanborough Reed Marsh, Hertfordshire (353 days) |
|--|---|---|------------|----------|----|--|

| | | | | | | |
|---------|---|----|--|----------|----|--|
| R693036 | N | 5M | | 16/01/05 | SK | Welwyn Garden City (WH), Hertfordshire |
|---------|---|----|--|----------|----|--|

| | | | | | | |
|--|---|----|------------|----------|----|---|
| | R | 4M | Recaptured | 22/01/05 | PO | Welwyn Garden City (WH), Hertfordshire (6 days) |
|--|---|----|------------|----------|----|---|

| | | | | | | |
|---------|---|----|--|----------|----|--|
| R693658 | N | 3M | | 19/11/05 | PO | Welwyn Garden City (WH), Hertfordshire |
|---------|---|----|--|----------|----|--|

| | | | | | | |
|--|---|----|------------|----------|----|--|
| | R | 3M | Recaptured | 20/11/05 | PM | Welwyn Garden City (WH), Hertfordshire (1 day) |
|--|---|----|------------|----------|----|--|

| | | | | | | |
|---------|---|----|--|----------|----|--|
| R695204 | N | 6M | | 09/01/09 | PO | Welwyn Garden City (WH), Hertfordshire |
|---------|---|----|--|----------|----|--|

| | | | | | | |
|--|---|----|------------|----------|----|---|
| | R | 6M | Recaptured | 03/01/10 | PO | Welwyn Garden City (WH), Hertfordshire (359 |
|--|---|----|------------|----------|----|---|

days)

| | | | | | | |
|---------|---|----|--|----------|----|--|
| R695234 | N | 5F | | 10/01/09 | PO | Welwyn Garden City (WH), Hertfordshire |
|---------|---|----|--|----------|----|--|

| | | | | | | |
|--|---|----|------------|----------|----|--|
| | R | 5F | Recaptured | 31/01/09 | PO | Welwyn Garden City (WH), Hertfordshire (21 |
|--|---|----|------------|----------|----|--|

days)

| | | | | | | |
|---------|---|----|--|----------|----|--|
| R695238 | N | 6F | | 10/01/09 | PO | Welwyn Garden City (WH), Hertfordshire |
|---------|---|----|--|----------|----|--|

| | | | | | | |
|--|---|----|------------|----------|----|---|
| | R | 6F | Recaptured | 16/01/09 | PO | Welwyn Garden City (WH), Hertfordshire (6 days) |
|--|---|----|------------|----------|----|---|

| | | | | | | |
|---------|---|----|--|----------|----|--|
| R695244 | N | 5M | | 16/01/09 | PO | Welwyn Garden City (WH), Hertfordshire |
|---------|---|----|--|----------|----|--|

| | | | | | | |
|--|---|----|------------|----------|----|--|
| | R | 4M | Recaptured | 14/02/09 | BT | Welwyn Garden City (WH), Hertfordshire (29 |
|--|---|----|------------|----------|----|--|

days)

| | | | | | | |
|---------|---|----|--|----------|----|--|
| R695247 | N | 5M | | 16/01/09 | PO | Welwyn Garden City (WH), Hertfordshire |
|---------|---|----|--|----------|----|--|

| | | | | | | |
|--|---|----|------------|----------|----|---|
| | R | 5M | Recaptured | 23/01/09 | PO | Welwyn Garden City (WH), Hertfordshire (7 days) |
|--|---|----|------------|----------|----|---|

| | | | | | | |
|---------|---|----|--|----------|----|--|
| R695272 | N | 5M | | 23/01/09 | PO | Welwyn Garden City (WH), Hertfordshire |
|---------|---|----|--|----------|----|--|

| | | | | | | |
|--|---|----|------------|----------|----|--|
| | R | 5M | Recaptured | 08/02/09 | PO | Welwyn Garden City (WH), Hertfordshire (16 |
|--|---|----|------------|----------|----|--|

days)

days)

| | | | | | | |
|--|---|----|------------|----------|--|--|
| | C | 2M | Recaptured | 28/10/09 | | near Marsworth, Hertfordshire (33 km, W, 278 |
|--|---|----|------------|----------|--|--|

| | | | | | | |
|---------|---|----|--|----------|----|--|
| R695329 | N | 5F | | 08/02/09 | PM | Welwyn Garden City (WH), Hertfordshire |
|---------|---|----|--|----------|----|--|

| | | | | | | |
|--|---|----|------------|----------|----|---|
| | R | 5F | Recaptured | 14/02/09 | PO | Welwyn Garden City (WH), Hertfordshire (6 days) |
|--|---|----|------------|----------|----|---|

| | | | | | | |
|---------|---|----|--|----------|----|--|
| R695373 | N | 6M | | 17/02/09 | BT | Welwyn Garden City (WH), Hertfordshire |
|---------|---|----|--|----------|----|--|

| | | | | | | |
|--|---|----|------------|----------|----|---|
| | R | 4M | Recaptured | 22/02/09 | PO | Welwyn Garden City (WH), Hertfordshire (5 days) |
|--|---|----|------------|----------|----|---|

| | | | | | | |
|---------|---|----|--|----------|----|--|
| R695384 | N | 5F | | 17/02/09 | BT | Welwyn Garden City (WH), Hertfordshire |
|---------|---|----|--|----------|----|--|

| | | | | | | |
|--|---|----|------------|----------|----|---|
| | R | 5F | Recaptured | 22/02/09 | PO | Welwyn Garden City (WH), Hertfordshire (5 days) |
|--|---|----|------------|----------|----|---|

| | | | | | | |
|---------|---|----|--|----------|----|--|
| R695510 | N | 3F | | 28/12/09 | PO | Welwyn Garden City (WH), Hertfordshire |
|---------|---|----|--|----------|----|--|

60days)

| | | | | | | |
|--|---|----|------------|----------|-----|---|
| | R | 6F | Recaptured | 26/02/12 | KRS | Welwyn Garden City (WH), Hertfordshire (2 yrs |
|--|---|----|------------|----------|-----|---|

| | | | | | | |
|---------|-----------------|----|------------|----------|-----|---|
| R695511 | N | 4F | | 28/12/09 | PO | Welwyn Garden City (WH), Hertfordshire |
| | R | 6F | Recaptured | 01/01/10 | PO | Welwyn Garden City (WH), Hertfordshire (4 days) |
| R695574 | N | 5M | | 24/01/10 | PM | Welwyn Garden City (WH), Hertfordshire |
| | R | 5M | Recaptured | 20/02/10 | PO | Welwyn Garden City (WH), Hertfordshire (27 days) |
| R695699 | N | 5F | | 26/02/12 | BW | Welwyn Garden City (WH), Hertfordshire |
| | R | 5F | Recaptured | 11/03/12 | KRS | Welwyn Garden City (WH), Hertfordshire (14 days) |
| R698447 | N | 5F | | 01/03/14 | KRS | Welwyn Garden City (WH), Hertfordshire |
| | R | 4F | Recaptured | 31/12/14 | KRS | Welwyn Garden City (WH), Hertfordshire (305 days) |
| | R | 6F | Recaptured | 20/01/16 | PO | Welwyn Garden City (WH), Hertfordshire (1 yr 325days) |
| T052820 | Unknown details | | | | | |
| T052820 | C | 6M | Recaptured | 16/01/09 | BT | Welwyn Garden City (WH), Hertfordshire |
| | C | 6M | Recaptured | 23/01/09 | PO | Welwyn Garden City (WH), Hertfordshire (7 days) |
| | C | 4M | Recaptured | 28/12/09 | PO | Welwyn Garden City (WH), Hertfordshire (346 days) |
| T066576 | N | 3M | | 03/10/04 | | Icklesham, East Sussex |
| | C | 3M | Recaptured | 26/12/04 | PO | Welwyn Garden City (WH), Hertfordshire (113 km, NNW, 84 days) |

Yellowhammer

| Ring number | Age/Typ | Capture | Date | Init | Details | |
|---------------------|---------|---------|------------|----------|-----------------------------------|---|
| Yellowhammer | | | | | | |
| K954447 | N | 3F | 23/11/97 | BT | Welwyn Garden City, Hertfordshire | |
| | R | 3F | Recaptured | 28/12/97 | BT | Welwyn Garden City, Hertfordshire (35 days) |
| K954448 | N | 3M | 23/11/97 | BT | Welwyn Garden City, Hertfordshire | |
| | R | 5M | Recaptured | 01/01/98 | BT | Welwyn Garden City, Hertfordshire (39 days) |
| K954460 | N | 4M | 29/11/97 | BT | Welwyn Garden City, Hertfordshire | |
| | R | 6M | Recaptured | 01/01/98 | BT | Welwyn Garden City, Hertfordshire (33 days) |
| K954498 | N | 5F | 21/01/98 | PO | Welwyn Garden City, Hertfordshire | |
| | R | 4F | Recaptured | 05/12/98 | PO | Welwyn Garden City, Hertfordshire (318 days) |
| K954905 | N | 4M | 16/12/98 | PO | Welwyn Garden City, Hertfordshire | |
| | R | 6M | Recaptured | 18/01/03 | PO | Welwyn Garden City (WH), Hertfordshire (4 yrs 33days) |
| N568330 | N | 6M | 12/01/02 | BT | Welwyn Garden City, Hertfordshire | |
| | R | 4M | Recaptured | 24/11/02 | PO | Welwyn Garden City, Hertfordshire (316 days) |
| N568342 | N | 5M | 16/01/02 | BT | Welwyn Garden City, Hertfordshire | |
| | R | 4F | Recaptured | 28/12/02 | PO | Welwyn Garden City, Hertfordshire (346 days) |
| N568351 | N | 5M | 16/01/02 | BT | Welwyn Garden City, Hertfordshire | |
| | R | 6M | Recaptured | 05/02/03 | BT | Welwyn Garden City (WH), Hertfordshire (1 yr 20days) |
| R133052 | N | 3M | 19/10/02 | PO | Welwyn Garden City, Hertfordshire | |
| | R | 5M | Recaptured | 24/01/03 | PO | Welwyn Garden City (WH), Hertfordshire (97 days) |
| R133114 | N | 3M | 08/11/02 | BT | Welwyn Garden City, Hertfordshire | |

| | | | | | | |
|----------|---|----|------------|----------|----|---|
| days) | R | 4F | Recaptured | 11/10/03 | PO | Welwyn Garden City (WH), Hertfordshire (337 |
| days) | R | 4F | Recaptured | 15/10/03 | PO | Welwyn Garden City (WH), Hertfordshire (341 |
| days) | R | 4F | Recaptured | 23/10/03 | BT | Welwyn Garden City (WH), Hertfordshire (349 |
| 4days) | R | 4F | Recaptured | 12/11/03 | BT | Welwyn Garden City (WH), Hertfordshire (1 yr |
| R133115 | N | 3 | | 08/11/02 | BT | Welwyn Garden City, Hertfordshire |
| | R | 3F | Recaptured | 13/11/02 | BT | Welwyn Garden City, Hertfordshire (5 days) |
| R133118 | N | 3M | | 08/11/02 | BT | Welwyn Garden City, Hertfordshire |
| days) | R | 4M | Recaptured | 18/10/03 | BT | Welwyn Garden City (WH), Hertfordshire (344 |
| R133146 | N | 3M | | 11/11/02 | PO | Welwyn Garden City, Hertfordshire |
| | R | 2M | Recaptured | 13/11/02 | BT | Welwyn Garden City, Hertfordshire (2 days) |
| | R | 3M | Recaptured | 06/12/02 | PO | Welwyn Garden City, Hertfordshire (25 days) |
| R133150 | N | 3F | | 12/11/02 | PO | Welwyn Garden City, Hertfordshire |
| | R | 3F | Recaptured | 30/11/02 | BT | Welwyn Garden City, Hertfordshire (18 days) |
| R133151 | N | 3M | | 12/11/02 | PO | Welwyn Garden City, Hertfordshire |
| | R | 3M | Recaptured | 24/11/02 | PO | Welwyn Garden City, Hertfordshire (12 dayse/ |
| R133157 | N | 4F | | 12/11/02 | PO | Welwyn Garden City, Hertfordshire |
| days) | R | 6F | Recaptured | 17/04/03 | PO | Welwyn Garden City (WH), Hertfordshire (156 |
| R133164 | N | 3M | | 12/11/02 | PO | Welwyn Garden City, Hertfordshire |
| | R | 3M | Recaptured | 13/11/02 | BT | Welwyn Garden City, Hertfordshire (1 day) |
| days) | R | 4M | Recaptured | 28/09/03 | PO | Welwyn Garden City (WH), Hertfordshire (320 |
| days) | R | 4M | Recaptured | 03/10/03 | PM | Welwyn Garden City (WH), Hertfordshire (325 |
| R133169 | N | 4F | | 12/11/02 | PO | Welwyn Garden City, Hertfordshire |
| days) | R | 6F | Recaptured | 24/01/03 | PO | Welwyn Garden City (WH), Hertfordshire (73 |
| days) | R | 6F | Recaptured | 19/02/03 | PO | Welwyn Garden City (WH), Hertfordshire (99 |
| days) | R | 6F | Recaptured | 25/02/03 | PO | Welwyn Garden City (WH), Hertfordshire (105 |
| R133170 | N | 3F | | 12/11/02 | PO | Welwyn Garden City, Hertfordshire |
| | R | 3F | Recaptured | 30/11/02 | BT | Welwyn Garden City, Hertfordshire (18 days) |
| 85days) | R | 6F | Recaptured | 05/02/05 | PO | Welwyn Garden City (WH), Hertfordshire (2 yrs |
| 176days) | R | 6F | Recaptured | 07/05/05 | PM | Welwyn Garden City (WH), Hertfordshire (2 yrs |
| R133172 | N | 3F | | 12/11/02 | PO | Welwyn Garden City, Hertfordshire |
| days) | R | 5F | Recaptured | 05/02/03 | BT | Welwyn Garden City (WH), Hertfordshire (85 |
| days) | R | 5F | Recaptured | 07/02/03 | PO | Welwyn Garden City (WH), Hertfordshire (87 |
| R133186 | N | 3M | | 13/11/02 | BT | Welwyn Garden City, Hertfordshire |
| days) | R | 5M | Recaptured | 12/04/03 | PO | Welwyn Garden City (WH), Hertfordshire (150 |

| | | | | | | |
|---------|---|----|------------|----------|----|---|
| R133197 | N | 3M | | 15/11/02 | PO | Welwyn Garden City, Hertfordshire |
| | R | 3M | Recaptured | 18/11/02 | PO | Welwyn Garden City, Hertfordshire (3 days) |
| R133201 | N | 3M | | 17/11/02 | PO | Welwyn Garden City, Hertfordshire |
| | R | 3M | Recaptured | 06/12/02 | PO | Welwyn Garden City, Hertfordshire (19 days) |
| R133213 | N | 3M | | 18/11/02 | PO | Welwyn Garden City, Hertfordshire |
| | R | 6M | Recaptured | 30/04/05 | PM | Welwyn Garden City (WH), Hertfordshire (2 yrs 163days) |
| R133223 | N | 3M | | 23/11/02 | BT | Welwyn Garden City, Hertfordshire |
| | R | 4M | Recaptured | 18/04/03 | PM | Welwyn Garden City (WH), Hertfordshire (146 days) |
| R133224 | N | 3M | | 23/11/02 | BT | Welwyn Garden City, Hertfordshire |
| | R | 4M | Recaptured | 16/04/03 | PO | Welwyn Garden City (WH), Hertfordshire (144 days) |
| R133227 | N | 2F | | 23/11/02 | BT | Welwyn Garden City, Hertfordshire |
| | R | 2F | Recaptured | 06/12/02 | PO | Welwyn Garden City, Hertfordshire (13 days) |
| R133244 | N | 3F | | 30/11/02 | BT | Welwyn Garden City, Hertfordshire |
| | R | 5F | Recaptured | 20/02/03 | PO | Welwyn Garden City (WH), Hertfordshire (82 days) |
| R133248 | N | 3F | | 30/11/02 | BT | Welwyn Garden City, Hertfordshire |
| | R | 5F | Recaptured | 18/04/03 | PM | Welwyn Garden City (WH), Hertfordshire (139 days) |
| R133261 | N | 3F | | 06/12/02 | PO | Welwyn Garden City, Hertfordshire |
| | R | 5F | Recaptured | 05/02/03 | BT | Welwyn Garden City (WH), Hertfordshire (61 days) |
| R133354 | N | 5F | | 19/01/03 | PO | Welwyn Garden City (WH), Hertfordshire |
| | R | 5F | Recaptured | 24/01/03 | PO | Welwyn Garden City (WH), Hertfordshire (5 days) |
| | R | 5F | Recaptured | 05/02/03 | BT | Welwyn Garden City (WH), Hertfordshire (17 days) |
| R133409 | N | 5M | | 05/02/03 | PO | Welwyn Garden City (WH), Hertfordshire |
| | R | 5M | Recaptured | 07/02/03 | PO | Welwyn Garden City (WH), Hertfordshire (2 days) |
| R133612 | N | 5M | | 12/04/03 | PO | Welwyn Garden City (WH), Hertfordshire |
| | R | 5M | Recaptured | 20/04/03 | PO | Welwyn Garden City (WH), Hertfordshire (8 days) |
| | R | 6M | Recaptured | 27/04/05 | PO | Welwyn Garden City (WH), Hertfordshire (2 yrs 15days) |
| R133613 | N | 5F | | 12/04/03 | PO | Welwyn Garden City (WH), Hertfordshire |
| | R | 5F | Recaptured | 16/04/03 | PO | Welwyn Garden City (WH), Hertfordshire (4 days) |
| R133625 | N | 6M | | 16/04/03 | PO | Welwyn Garden City (WH), Hertfordshire |
| | R | 6M | Recaptured | 17/04/03 | PO | Welwyn Garden City (WH), Hertfordshire (1 day) |
| R133637 | N | 6M | | 17/04/03 | PO | Welwyn Garden City (WH), Hertfordshire |
| | R | 6M | Recaptured | 20/04/05 | PO | Welwyn Garden City (WH), Hertfordshire (2 yrs 3days) |
| R133740 | N | 3F | | 28/09/03 | PO | Welwyn Garden City (WH), Hertfordshire |
| | R | 3F | Recaptured | 03/10/03 | PM | Welwyn Garden City (WH), Hertfordshire (5 days) |
| | R | 3F | Recaptured | 18/10/03 | PM | Welwyn Garden City (WH), Hertfordshire (20 days) |
| R133747 | N | 4M | | 02/10/03 | PO | Welwyn Garden City (WH), Hertfordshire |
| | R | 4M | Recaptured | 18/10/03 | PM | Welwyn Garden City (WH), Hertfordshire (16 days) |

| | | | | | | |
|----------|---|----|------------|----------|----|---|
| R133817 | N | 4M | | 15/10/03 | PO | Welwyn Garden City (WH), Hertfordshire |
| days) | R | 4M | Recaptured | 01/11/03 | PM | Welwyn Garden City (WH), Hertfordshire (17 |
| 187days) | R | 6M | Recaptured | 20/04/05 | BT | Welwyn Garden City (WH), Hertfordshire (1 yr |
| R133829 | N | 4M | | 17/10/03 | PO | Welwyn Garden City (WH), Hertfordshire |
| | R | 4M | Recaptured | 18/10/03 | PO | Welwyn Garden City (WH), Hertfordshire (1 day) |
| R133831 | N | 3F | | 17/10/03 | PO | Welwyn Garden City (WH), Hertfordshire |
| | R | 3F | Recaptured | 23/10/03 | BT | Welwyn Garden City (WH), Hertfordshire (6 days) |
| R133838 | N | 3M | | 18/10/03 | PO | Welwyn Garden City (WH), Hertfordshire |
| | R | 3M | Recaptured | 23/10/03 | PO | Welwyn Garden City (WH), Hertfordshire (5 days) |
| R133881 | N | 4M | | 18/10/03 | BT | Welwyn Garden City (WH), Hertfordshire |
| | R | 4M | Recaptured | 23/10/03 | BT | Welwyn Garden City (WH), Hertfordshire (5 days) |
| 201days) | R | 6M | Recaptured | 07/05/05 | PM | Welwyn Garden City (WH), Hertfordshire (1 yr |
| R133884 | N | 3M | | 18/10/03 | PO | Welwyn Garden City (WH), Hertfordshire |
| | R | 3M | Recaptured | 23/10/03 | PO | Welwyn Garden City (WH), Hertfordshire (5 days) |
| R133897 | N | 3M | | 23/10/03 | PO | Welwyn Garden City (WH), Hertfordshire |
| days) | R | 4M | Recaptured | 16/10/04 | SK | Welwyn Garden City (WH), Hertfordshire (359 |
| R691759 | N | 3F | | 13/11/04 | MF | Welwyn Garden City (WH), Hertfordshire |
| | R | 3F | Recaptured | 27/11/04 | PO | Welwyn Garden City (WH), Hertfordshire (14days) |
| R691767 | N | 3M | | 13/11/04 | SK | Welwyn Garden City (HM), Hertfordshire |
| days) | R | 3 | Recaptured | 26/12/04 | PO | Welwyn Garden City (WH), Hertfordshire (43 |
| R691795 | N | 3F | | 16/11/04 | PO | Welwyn Garden City (WH), Hertfordshire |
| | R | 3F | Recaptured | 24/11/04 | PO | Welwyn Garden City (WH), Hertfordshire (8 days) |
| R691828 | N | 3M | | 24/11/04 | PO | Welwyn Garden City (WH), Hertfordshire |
| | R | 3M | Recaptured | 30/11/04 | PO | Welwyn Garden City (WH), Hertfordshire (6 days) |
| R691842 | N | 3M | | 27/11/04 | PM | Welwyn Garden City (WH), Hertfordshire |
| days) | R | 3M | Recaptured | 26/12/04 | PM | Welwyn Garden City (WH), Hertfordshire (29 |
| R691892 | N | 3M | | 26/12/04 | PM | Welwyn Garden City (WH), Hertfordshire |
| | R | 3M | Recaptured | 27/12/04 | PO | Welwyn Garden City (WH), Hertfordshire (1 day) |
| R691900 | N | 3F | | 27/12/04 | PO | Welwyn Garden City (WH), Hertfordshire |
| days) | R | 5F | Recaptured | 23/01/05 | GR | Welwyn Garden City (WH), Hertfordshire (27 |
| days) | R | 5F | Recaptured | 05/02/05 | SK | Welwyn Garden City (WH), Hertfordshire (40 |
| R691901 | N | 3F | | 27/12/04 | PO | Welwyn Garden City (WH), Hertfordshire |
| days) | R | 4F | Recaptured | 30/04/05 | PM | Welwyn Garden City (WH), Hertfordshire (124 |
| R693139 | N | 5M | | 05/02/05 | SK | Welwyn Garden City (WH), Hertfordshire |
| days) | R | 5M | Recaptured | 30/04/05 | PM | Welwyn Garden City (WH), Hertfordshire (84 |
| R693236 | N | 6F | | 20/04/05 | PO | Welwyn Garden City (WH), Hertfordshire |

| | | | | | | |
|----------|---|----|------------|----------|-----|---|
| | R | 6F | Recaptured | 30/04/05 | KS | Welwyn Garden City (WH), Hertfordshire (10 days) |
| R693290 | N | 5M | | 23/04/05 | BT | Welwyn Garden City (WH), Hertfordshire |
| | R | 5M | Recaptured | 27/04/05 | PO | Welwyn Garden City (WH), Hertfordshire (4 days) |
| | R | 5M | Recaptured | 30/04/05 | KS | Welwyn Garden City (WH), Hertfordshire (7 days) |
| | R | 6M | Recaptured | 14/02/09 | PO | Welwyn Garden City (WH), Hertfordshire (3 yrs) |
| 297days) | | | | | | |
| R693344 | N | 4F | | 30/04/05 | KS | Welwyn Garden City (WH), Hertfordshire |
| | R | 5F | Recaptured | 07/05/05 | PO | Welwyn Garden City (WH), Hertfordshire (7 days) |
| R693563 | N | 3M | | 23/10/05 | PO | Welwyn Garden City (WH), Hertfordshire |
| | R | 3M | Recaptured | 17/11/05 | PO | Welwyn Garden City (WH), Hertfordshire (25 days) |
| R695210 | N | 5M | | 09/01/09 | PO | Welwyn Garden City (WH), Hertfordshire |
| | R | 5M | Recaptured | 10/01/09 | PO | Welwyn Garden City (WH), Hertfordshire (1 day) |
| R695332 | N | 6M | | 08/02/09 | PO | Welwyn Garden City (WH), Hertfordshire |
| | R | 6M | Recaptured | 17/02/09 | BT | Welwyn Garden City (WH), Hertfordshire (9 days) |
| R695347 | N | 6M | | 08/02/09 | PM | Welwyn Garden City (WH), Hertfordshire |
| | R | 6M | Recaptured | 25/04/10 | BT | Welwyn Garden City (WH), Hertfordshire (1 yr) |
| 76days) | | | | | | |
| | R | 6M | Recaptured | 26/02/12 | KRS | Welwyn Garden City (WH), Hertfordshire (3 yrs) |
| 18days) | | | | | | |
| | R | 6M | Recaptured | 11/03/12 | KRS | Welwyn Garden City (WH), Hertfordshire (3 yrs) |
| 32days) | | | | | | |
| | R | 6M | Recaptured | 01/04/12 | KRS | Welwyn Garden City (WH), Hertfordshire (3 yrs) |
| 53days) | | | | | | |
| R695374 | N | 5M | | 17/02/09 | PO | Welwyn Garden City (WH), Hertfordshire |
| | R | 6M | Recaptured | 17/04/10 | PO | Welwyn Garden City (WH), Hertfordshire (1 yr) |
| 59days) | | | | | | |
| R695376 | N | 5M | | 17/02/09 | BT | Welwyn Garden City (WH), Hertfordshire |
| | R | 4M | Recaptured | 12/11/09 | PO | Welwyn Garden City (WH), Hertfordshire (268 days) |
| R695385 | N | 4F | | 22/02/09 | PM | Welwyn Garden City (WH), Hertfordshire |
| | R | 4F | Recaptured | 17/04/10 | PO | Welwyn Garden City (WH), Hertfordshire (1 yr) |
| 54days) | | | | | | |
| R695463 | N | 4F | | 12/11/09 | PM | Welwyn Garden City (WH), Hertfordshire |
| | R | 4F | Recaptured | 17/04/10 | PO | Welwyn Garden City (WH), Hertfordshire (156 days) |
| R695499 | N | 3M | | 04/12/09 | PO | Welwyn Garden City (WH), Hertfordshire |
| | R | 5M | Recaptured | 25/04/10 | PO | Welwyn Garden City (WH), Hertfordshire (142 days) |
| R695557 | N | 5F | | 24/01/10 | PO | Welwyn Garden City (WH), Hertfordshire |
| | R | 5F | Recaptured | 17/04/10 | PO | Welwyn Garden City (WH), Hertfordshire (83 days) |
| R695727 | N | 6M | | 26/02/12 | KRS | Welwyn Garden City (WH), Hertfordshire |
| | R | 6M | Recaptured | 31/03/12 | PO | Welwyn Garden City (WH), Hertfordshire (34 days) |

