

NEWS AND UPDATES FROM ACROSS THE BOROUGH

# ONE

## Welwyn Hatfield



**INSIDE!  
YOUR CUT-  
OUT-AND-  
KEEP BIN  
CALENDAR**

**BIG  
SUMMER  
2022**

# BIG SUMMER OF FUN!

**INSIDE TOWN CENTRES | BIG SUMMER | COMMUNITY | COUNCILLORS**



[www.facebook.com/welwynhatfield](https://www.facebook.com/welwynhatfield)



[@WelHatCouncil](https://twitter.com/WelHatCouncil)



**WELWYN  
HATFIELD**





## WELCOME

# From the Leader

For the first time in what seems like a long time, a summer without restrictions beckons, and in Welwyn Hatfield there will be plenty of events and activities to look forward to over the coming months.

Our great community spirit, such a heart-warming constant through the difficult days of the pandemic, was on display for much happier reasons as we celebrated the Queen's Platinum Jubilee last month. We've received some fantastic photos of your street parties, which you can see on page 13 – is yours featured?!

If the Jubilee was the tonic many of us needed as the cost of living crisis bites, tangible support is at hand with our Wellness funding. I really encourage local organisations which work to improve the physical and mental wellbeing of residents, or health inequalities, to apply – page 3 has the details.

There is more light relief in store though, as we have more great community activities planned. Among them is the new Hatfield Community Fair, which marks the start of our Big Summer. We think there will be something for all ages, so find out what's on this year on pages 8 and 9.

Our regeneration programme in both town centres is really taking shape now, particularly at the new Hatfield Rise development in South Hatfield. Pages 4 and 5 give you the full update on it all.

Alongside this, the recently-reopened Anniversary Gardens are providing a beautiful backdrop for soaking up the summer sunshine. Our brilliant team who helped make this possible were also behind our Tree City of the World 2022 accolade – pages 6-7 quite rightly shine a spotlight on their work.

I wish you all a wonderful summer.

**Tony Kingsbury**  
Leader of the Council

## COUNCIL UPDATES FROM AROUND THE BOROUGH



**1** In February, the **Welwyn Hatfield Youth Awards Ceremony** was held at **Campus West**. The ceremony celebrated not only the winners but all the nominees in categories such as Young Artist, Young Entrepreneur and Young Volunteer.



**2** The award-winning **Splashlands** reopened in time for Easter. Splashlands includes a paddling river, water sprays and jets which are surrounded by a wonderful nautical-themed adventure playground providing fun for children of all ages.



**3** **Welwyn Hatfield** was recognised as a **'Tree City of the World'** for the third year in a row! Around the world, 138 cities in 21 countries have achieved recognition this year. Welwyn Hatfield had managed a total restock of 323 plants, along with 1,000 volunteers.



**4** In March, **construction began on the first crematorium in Welwyn Hatfield**. The new construction will offer a new larger chapel for burial and cremation funeral services, and merges the facilities required for both services.



**5** Funded by the University of Hertfordshire and run jointly by the council and Herts Police, **Operation Balsam** made a week-long return in May with extended noise nuisance patrols promoting considerate socialising.



**6** The **inspirational achievements of local people** were celebrated at the Annual Council Meeting in May, with the announcement of the **Civic Awards winners for 2022**, including the **Young Person's Award** and the **Community Award**.

# The Wellness Community Fund



**Organisations across Welwyn Hatfield can now apply for a grant from the new Wellness Community Fund.**

The grant can be used towards community engagement and outreach work that helps to improve mental and physical wellbeing and/or reduces health inequalities in the community, especially for health issues impacted by the spread of coronavirus.

Applications to the fund are especially welcomed for initiatives that engage with residents to understand barriers and increase awareness of the benefits of activities that contribute to physical and mental wellbeing.

Organisations can apply to the fund for a grant of up to £5,000. It is preferred that applications are submitted by 31 July 2022. However, applications received after this date may\* still be considered.

**Applications will be prioritised for projects that demonstrate compelling and encouraging ways to:**

- Improve outreach of public health messages into communities where interaction with health services is lower.
- Raise awareness of the ongoing prevalence of Covid-19 and how we can reduce the spread.
- Tackle misinformation about vaccines and increase trust around vaccine safety.



- Overcome barriers to accessing health services including language, location and transport.
- Support to encourage residents to manage their own health and wellbeing, including access to the right information and support to stay healthy.

\*The funding available is capped and applications should be submitted as soon as possible. For further information and to apply go to the council's website at [www.welhat.gov.uk/community-grants/wellness-community-fund-grant](http://www.welhat.gov.uk/community-grants/wellness-community-fund-grant)

## Grants help businesses reduce their carbon footprint

**Grants of up to £5,000 are available to help Welwyn Hatfield businesses fund the cost of energy saving measures.**

Under the scheme, which is part of the Eastern New Energy project, the council has been visiting local businesses to carry out free energy efficiency audits to identify measures to reduce their carbon footprint. Grants of up to £5,000 have been awarded to undertake a range of improvements including changing lighting to LEDs,

replacing boilers and improving insulation.

Twenty two businesses have so far registered to take part in the scheme which is funded by the council's climate change budget. To be eligible for a grant, businesses must be small and medium sized enterprises (less than 250 employees) or a social enterprise.



If you are a local business and would like to make energy saving changes, please visit: [www.inwelwynhatfieldbusinessmatters.org.uk/energy-grant/](http://www.inwelwynhatfieldbusinessmatters.org.uk/energy-grant/) for more information and to register.



## Pre-book your council appointment

If you would like to come into the council office to speak to an officer, please do pre-book an appointment, as this will speed up the process for you. Please call us on **01707 357000** or email [contact-whc@welhat.gov.uk](mailto:contact-whc@welhat.gov.uk) to do this.

Contact details for specific services can be found at [www.welhat.gov.uk/contact](http://www.welhat.gov.uk/contact)



# Hatfield Town Centre update

Below: Construction underway on One Town Centre



## One Town Centre

Visitors to Hatfield town centre can see how the multi-million pound regeneration of this key site is starting to take shape.

Construction of the superstructure (everything on the building above ground) for the first block is well underway and similar work is commencing on the other two blocks.

Due for completion next summer, the project to enhance this gateway to the

town centre will provide new commercial units as well as 71 high-quality homes, 38 of which will be affordable housing.

A new outdoor public space will be created between the three buildings and landscaped to complement nearby White Lion Square.



Work is progressing well on this ambitious £45 million regeneration scheme to transform the High View neighbourhood centre in south Hatfield, and the first residential tenants are starting to move in.

When complete, Hatfield Rise will deliver 146 quality new homes (37 affordable) ranging from one-bedroom contemporary apartments to three-bedroom houses.

The project will also include 18 retail units, a new green space at the heart of the development and improved connections to the popular Hive community centre.

Local businesses are continuing to trade throughout the works.

## Link Drive

The former car park has been fenced off with the skate park remaining open. Site investigations are underway, including exploratory archeological digging.

The new residential development will provide 80 new homes plus improved connectivity to the town centre through the creation of a new footpath with improved landscaping and green spaces.

The scheme is due to be completed in Summer 2024.

Keep checking [one.welhat.gov.uk/major-projects](https://one.welhat.gov.uk/major-projects) for updates on all major projects





WGC  
2120

# Welwyn Garden City news

Above: The Anniversary Gardens and, inset, the 'Rosa Welwyn Garden Glory' rose

## Anniversary Gardens

The opening of the new-look Anniversary Gardens was marked with the planting of a new tree alongside a commemorative plaque as part of the Queen's Green Canopy project to celebrate Her Majesty's Platinum Jubilee.

The gardens are a tranquil, picturesque spot in the town centre for visitors to stop a while and relax. And they complement the new public space at the northern end of Stonehills, following recent improvement works undertaken in partnership with Herts County Council.

Anniversary Gardens' design has sustainability at its heart with pollinator friendly plants that require less water.

Seven large Hornbeams provide a visual representation of the seven decades of the

Queen's reign, with the Prunus Tai Haku (Great White Cherry) added for the Queen's Green Canopy.

In celebration of founder of the Garden City movement Ebenezer Howard's time spent working in Chicago, grasses and prairie plants have been selected to provide summer and autumn colour.

Also included in the new planting is 'Rosa Welwyn Garden Glory' – a fragrant apricot rose named after the town.



Artist's impression of new car park

## Car park at Campus West

**Construction of the new single deck is underway, with work expected to be complete this winter.**

Campus West remains open as normal. Two temporary Blue Badge parking bays are available near the entrance to the building and visitors can still use the drop-off and pick-up point.

The purpose of this extra deck is to minimise the impact on the town centre when Campus East car park

closes for redevelopment into new homes.

This new car park at Campus West will also provide more provision for disabled parking, parent-and-child bays and electric car charging, as well as new cycle racks.

Externally there will be new planting areas and trees along with some bespoke feature cladding on the new deck.

Alternative town centre car parking can be found at [www.campuswest.co.uk](http://www.campuswest.co.uk)

For more information on the WGC 2120 regeneration project, visit [one.welhat.gov.uk/WGC2120](http://one.welhat.gov.uk/WGC2120)



# Climate Change

In June 2019, the council declared a climate change emergency and set itself the target of being net zero by 2030. This means that the amount of carbon we add to the atmosphere will be no more than the amount we remove.

Since June 2019, our greenhouse gas emissions have reduced by 507 tonnes and we have invested in 100 % green electricity from our electricity supplier for all council buildings. Progress is being made in many other areas, as shown below.

We have also committed to:

**Comply with statutory obligations** to mitigate and adapt to climate change.

**Work with, support, encourage and engage** residents, communities, businesses and other partners in initiatives to reduce carbon emissions.

**Embed climate change mitigation and adaptation** into our plans, strategies and policies.

**Reduce carbon emissions across the borough** by promoting energy efficiency measures, sustainable construction, renewable energy, sustainable transport and behavioural change.



## Changes to Bank Holiday bin collections

### Usual Collection Day

Monday 29th August  
Tuesday 30th August  
Wednesday 31st August  
Thursday 1st September  
Friday 2nd September

### Bank Holiday Collection

Tuesday 30th August  
Wednesday 31st August  
Thursday 1st September  
Friday 2nd September  
Saturday 3rd September

You can check your bin collection day or report a missed bin on our website:  
[www.welhat.gov.uk/waste](http://www.welhat.gov.uk/waste)







# Landscape and Ecology team

## Geeky about trees!

Welwyn Hatfield has been given **Tree City of the World** status for the third year running so we're taking a look at the council's Landscape and Ecology Team whose hard work and dedication has earned the borough this prestigious award.

Our highly qualified and experienced team manage over 30,000 individual trees as well as various woodland areas, open spaces, allotment sites, micro-orchards and several sites of special scientific interest (SSSI).

They are passionate about maintaining and improving these different landscapes within the borough as the council recognise the importance of these to residents and the benefits they bring, particularly around health and wellbeing.

## Mapped out!

The team have a digital map and database of the urban trees they manage. Each tree is numbered and details such as species, age and any works undertaken are saved for reference. This is updated as the trees are inspected.

With so many trees to look after, inspections take place all year round. Winter is planting season - the council plant around 300 trees a year

across the borough – and autumn is for pollarding and when the woodland surveys are held. We are diversifying our tree stock to help guard against disease and support a mixture of wildlife.

Management of our woodlands also involves maintaining vegetation at a range of height levels to encourage new growth and provide different types of habitat for wildlife.

## Get involved!

We know how important our trees and green spaces are to residents and the benefits they provide both environmentally and to our general wellbeing, so we are proud to work with the local community.

The Landscape and Ecology Team supports local volunteer groups maintain some of the borough's nature reserves and woodlands, such as Danesbury Park and Fernery, Sherrardspark Wood and Northaw Great Wood.

We also run a successful Tree Warden scheme and have around 60 volunteers who help us to monitor the trees in their neighbourhoods.

For more information about volunteer opportunities see our website [www.welhat.gov.uk/jobs-training/volunteer](http://www.welhat.gov.uk/jobs-training/volunteer) or email us at [contact-whc@welhat.gov.uk](mailto:contact-whc@welhat.gov.uk)

## Tree Cities of the World



Welwyn Hatfield, which has been awarded Tree City of the World status for the third year running, is one of only 19 places in the UK, and 138 worldwide, to be given this honour.

To achieve the award we had to meet five core standards of urban forest management:

**A dedicated, qualified team to care for our trees**

**Policies in place for the management of our trees**

**Updated inventory of our tree stock**

**Funding for our tree management plan**

**Celebrating and raising awareness of our trees**

For more information see [www.treecitiesoftheworld.org](http://www.treecitiesoftheworld.org)



# Women and Girls Festival

Following hot on the heels of the successful This Girl Can in Welwyn Hatfield campaign in June, comes a fantastic new community event. The council is joining forces with Herts Sports Partnership to continue raising the profile of women's sport with the all-new Women and Girls Festival!



The fun happens at Peartree Primary School in WGC on Saturday 16 July. From 10am until 2pm, women and girls will be offered the opportunity to participate in free sport and physical activity sessions, led by local sports clubs and organisations. You will be able to book onto your preferred activities.

All abilities are welcome, so whether you want to try an activity for the first time or re-kindle your love for an old sport there will be something on offer for everyone.

On the day, you will also be able to find out more about the sports clubs and activity sessions that are local to you.

To view the full calendar of activities and information on how to book please visit [one.welhat.gov.uk](https://one.welhat.gov.uk) and search for 'Women and girls sports festival.'

If you have any questions, please contact [sport@welhat.gov.uk](mailto:sport@welhat.gov.uk)



**BIG  
SUMMER  
2022**

**Yes, Big Summer is back!**  
The festival of summer fun for young people and families starts earlier this year, running from 25 July to 14 August.

Lots of different types of activities will be taking place across the borough for young people, including skiing at Gosling Sports Park and a basketball festival at King George V Playing Fields!

But this is the tip of the iceberg, as everything from arts to soft play, sports to cinema will be on offer, courtesy of a range of local organisations and sports clubs. These will be held across different venues and parks, including Campus West in WGC and The Hive in Hatfield.



## Get more connected in your community

**Come along to the council's Hatfield Community Fair in White Lion Square on Saturday 23 July and Hatfield Library to find out about all that is on offer in your local community.**

From 11am until 4pm, you can take the opportunity to connect with organisations, charities and community groups that offer a wide range of support services. The aim of the event is to give residents a taste of how local groups are working for stronger, more resilient neighbourhoods – and how you can get involved should you wish to.

There will be something for everyone with lots of information available around health

and wellbeing, social connection and activity, skills and employment and environmental awareness, including food sourcing and waste. Interactive demonstrations will be staged from local clubs, as well as fun activities to get involved with.

Details of what's on offer can be found at [one.welhat.gov.uk/events](https://one.welhat.gov.uk/events)

For more information, please email [communitypartnerships@welhat.gov.uk](mailto:communitypartnerships@welhat.gov.uk)



# The Summer Reading Challenge returns!

Are you looking for a fun, free activity to keep your children busy over the summer holidays? Bring your family to your local library and sign up to the 2022 'Gadgeteers' Summer Reading Challenge, which runs from Saturday 9 July to Saturday 3 September.



Children are encouraged to read six books over the summer. You can read the books together with your child, they can read them independently, or even with a friend! For each two books read your child will receive a set of stickers. Those who complete the challenge will be rewarded with a medal, certificate, and pencil.

The 'Gadgeteers' Summer Reading Challenge will be finishing in style with a special author event on Sunday 25 September. Enter the prize draw when you sign up to win a chance to attend!

The Challenge is a fun way of maintaining your child's reading level over the summer so they can easily adjust to the learning environment of the new school year.

The Challenge is running at all Hertfordshire Libraries while stocks last, including Welwyn Garden City, Hatfield, Woodhall, Welwyn, Cuffley and Brookmans Park libraries. Join in the fun and keep the summer boredom at bay with the 2022 'Gadgeteers' Summer Reading Challenge.

For more details pop into your local library or visit [www.hertfordshire.gov.uk/libraries](http://www.hertfordshire.gov.uk/libraries) or call 0300 123 4049.

## Party time @ The Hive!

The Hive in South Hatfield will be buzzing this summer with so many reasons for the whole family to visit!

The Bouncy Castle Parties for kids are guaranteed to burn off energy with three inflatables, along with a dedicated room for party food. Catered options are available, or you can provide your own food.

Little ones can celebrate their birthday at Freddie's Den. A choice of bronze, silver or gold packages are available. All include exclusive hire of Freddie's Den and use of the soft play frame.

But don't forget there are plenty of other reasons to visit. This includes the many sporting and leisure activities that run throughout the week – from bounce classes to martial arts, children's dance classes, and play groups.

And did you know, there are many facilities for hire at The Hive? These include: a sports hall, studio, multi-use hall, dining room with stage, and the kitchen. Next door to The Hive is the newly refurbished Hilltop Community Centre, which also has facilities such as a hall, kitchen, storage room and changing rooms, suitable for classes, lectures, meetings, and group activities.

This is all alongside the popular Jimmy Mac's Activity Centre for retired and disabled people.

Find the venue located just off High View in south Hatfield.

You can also keep up to date with what's happening at The Hive by following the team on Facebook.



SCAN ME

## For what's going on near you

Keep up to date with the latest community news and find out what's going on across the borough by visiting our community website, **ONE Welwyn Hatfield.**

**ONE**





## WELWYN HATFIELD

*Working better, together*

We will publish details of all Welwyn Hatfield borough councillors here once a year. You may wish to keep these pages for reference. This information is also available online at [www.welhat.gov.uk/members](http://www.welhat.gov.uk/members)

### The Council

In Welwyn Hatfield there are 48 councillors representing the interests of people in 16 wards.

### The Cabinet

The Cabinet is made up of seven members from the controlling political group. It draws up major plans, strategies and budget proposals, and implements them once agreed at Council. The actions of the Cabinet are reviewed and monitored by the Overview and Scrutiny Committee.

### The Mayor

This year's Mayor is **Councillor Barbara Fitzsimon**. The Mayor is the borough's first citizen and a vital link between the community and the council. If you'd like to invite the Mayor to an event you are planning, please contact the Mayor's office on [mayors.office@welhat.gov.uk](mailto:mayors.office@welhat.gov.uk)

#### Brookmans Park & Little Heath



**Jonathan Boulton**  
**07790 007886**  
Council Offices  
The Campus  
Welwyn Garden City  
AL8 6AE



**Stephen Boulton**  
**01707 655999**  
Council Offices  
The Campus  
Welwyn Garden City  
AL8 6AE



**Rebecca Lass**  
**07734 204425**  
40 Calder Avenue  
Brookmans Park  
AL9 7AG

#### Haldens



**Barbara Fitzsimon**  
**01707 393013**  
46 Beauchamps  
Welwyn Garden City  
AL7 1FG



**Alastair Hellyer**  
**07917 673433**  
Council Offices  
The Campus  
Welwyn Garden City  
AL8 6AE



**Lucy Musk**  
**07527 664576**  
106 Birch Court  
Howlands  
Welwyn Garden City  
AL7 4JQ

#### Hatfield South West



**Lenny Brandon**  
**07956 275405**  
Council Offices  
The Campus  
Welwyn Garden City  
AL8 6AE



**Timothy Rowse**  
**07761 119480**  
14 Sycamore Avenue  
Hatfield  
AL10 8LZ



**Craig Stanbury**  
**01707 650527**  
Maynard House  
The Common  
Hatfield  
AL10 0NF

#### Hatfield Villages



**James Broach**  
**07800 553615**  
177 Clarkson Court  
Hatfield  
AL10 9GY



**Samuel Kasumu**  
**01707 440539**  
Council Offices  
The Campus  
Welwyn Garden City  
AL8 6AE



**Drew Richardson**  
**01707 709149**  
27 Elm Gardens  
Welwyn Garden City  
AL8 6RX

#### Panshanger



**Darrel Panter**  
**07852 305134**  
35 Knella Green  
Welwyn Garden City  
AL7 3NL



**Jane Quinton**  
**07528 367303**  
Council Offices  
The Campus  
Welwyn Garden City  
AL8 6AE



**Stan Tunstall**  
**07533 557219**  
31 Chilton Green  
Welwyn Garden City  
Herts  
AL7 2LS

#### Peartree



**Duncan Jones**  
**07850 792300**  
Council Offices  
The Campus  
Welwyn Garden City  
AL8 6AE



**Russ Platt**  
**01707 532531**  
Council Offices  
The Campus  
Welwyn Garden City  
AL8 6AE



**Jayne Ranshaw**  
**07769 685620**  
Council Offices  
The Campus  
Welwyn Garden City  
AL8 6AE

#### Sherrards



**Frank Marsh**  
**01707 696470**  
Council Offices  
The Campus  
Welwyn Garden City  
AL8 6AE



**Jean-Paul Skoczylas**  
**07851 346071**  
35 The Vineyard  
Welwyn Garden City  
AL8 7PY



**Flavia Wachuku**  
**07506 189299**  
Maynard House  
The Common  
Hatfield  
AL10 0NF



## Handside



**Gemma Moore**  
**07985 327434**  
Council Offices  
The Campus  
Welwyn Garden City  
AL8 6AE



**Michal Siewniak**  
**07825 021746**  
Council Offices  
The Campus  
Welwyn Garden City  
AL8 6AE



**Fiona Thomson**  
**01707 395932**  
Council Offices  
The Campus  
Welwyn Garden City  
AL8 6AE

## Hatfield Central



**James Bond**  
**07467 945920**  
Council Offices  
The Campus  
Welwyn Garden City  
AL8 6AE



**Pankit Shah**  
**07763 728383**  
Council Offices  
The Campus  
Welwyn Garden City  
AL8 6AE

At the time of going to press, the third councillor for this ward was TBC pending a by-election. Check [www.welhat.gov.uk](http://www.welhat.gov.uk) for the latest information.

## Hatfield East



**Larry Crofton**  
**07361 000734**  
Council Offices  
The Campus  
Welwyn Garden City  
AL8 6AE



**Caron Juggins**  
**07760 993231**  
44 Park Meadow  
Hatfield  
AL9 5HB

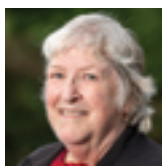


**James Lake**  
**01707 262632**  
Maynard House  
The Common  
Hatfield  
AL10 ONF

## Hollybush



**Margaret Birleson**  
**01707 328887**  
2 Carve Ley  
Welwyn Garden City  
AL7 3HJ



**Lynn Chesterman**  
**01707 334157**  
Council Offices  
The Campus  
Welwyn Garden City  
AL8 6AE



**Nick Pace**  
**07909 524438**  
Maynard House  
The Common  
Hatfield  
AL10 ONF

## Howlands



**Max Holloway**  
**07949 770505**  
35 Homestead Court  
Welwyn Garden City  
AL7 4LZ

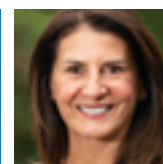


**Steve McNamara**  
**07719 696224**  
3 Great North Road  
Welwyn Garden City  
AL8 7TH

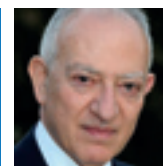


**Jill Weston**  
**01707 692420**  
25 Meadway  
Welwyn Garden City  
AL7 4NQ

## Northaw and Cuffley



**Gail Ganney**  
**07561 828010**  
Council Offices  
The Campus  
Welwyn Garden City  
AL8 6AE

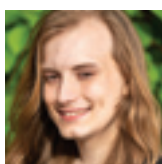


**George Michaelides**  
**01707 644221**  
19 Great North Road  
Brookmans Park  
AL9 6LB



**Bernard Sarson**  
**01707 266836**  
69 Selwyn Crescent  
Hatfield  
AL10 9NW

## Welham Green & Hatfield South



**Sandreni Bonfante**  
**07966 567389**  
59 Woods Avenue  
Hatfield  
AL10 8QF



**Teresa Travell**  
**01707 270549**  
22 Pooleys Lane  
Welham Green  
North Mymms  
Hatfield AL9 7LH



**Paul Zukowskyj**  
**01707 256262**  
107 Birchwood Ave  
Hatfield  
AL10 OPT

## Welwyn East



**Julie Cragg**  
**01438 714752**  
10 Chestnut Walk  
Welwyn  
AL6 0SB



**Terry Mitchinson**  
**07899 791242**  
Council Offices  
The Campus  
Welwyn Garden City  
AL8 6AE



**Roger Trigg**  
**01438 716392**  
8 Tanglewood  
Welwyn  
AL6 0RU

## Welwyn West



**Tony Kingsbury**  
**07540 608844**  
7 Blakes Way  
Welwyn  
AL6 9RE



**Paul Smith**  
**07779 297020**  
7 Blakes Way  
Welwyn  
AL6 9RE



**Sunny Thusu**  
**07855 286952**  
Council Offices  
The Campus  
Welwyn Garden City  
AL8 6AE



# The path to a better life



Positive Pathways is a project delivered by Welwyn Hatfield Borough Council and HCC Services for Young People (SFYP) helping those aged 11-19, living or attending school/college in the borough who may be vulnerable to exploitation.

They may be:

- Involved in or at risk of becoming involved in anti-social behaviour (ASB) within the community.
- Associating with people who are involved with ASB.
- Presenting challenging behaviour in the community.
- Struggling with personal or circumstantial issues associated with ASB including substance misuse or carrying a weapon.

Positive Pathways works with these young people and their families to understand their needs, help them identify and access local support services and agree an action plan to support them in achieving a positive outcome.

Support can be requested from families and young people themselves as well as schools and local agencies. See [www.welhat.gov.uk/positive-pathways](http://www.welhat.gov.uk/positive-pathways)

# Beware of loan sharks

**With the cost-of-living crisis beginning to bite for many families, the offer of quick cash can understandably be hard to resist. But it can come at a huge price.**

A loan shark is someone who lends money illegally without proper authorisation from the Financial Conduct Authority (FCA). Unlike their often-menacing image in the media, they can be another parent in the school playground, a friend of the family, or a neighbour. Once involved, the situation can quickly spiral out of control and borrowers can be subjected to threats, violence, and intimidation.

Warning signs that indicate you could be dealing with an illegal lender include giving no paperwork upon the agreement of a loan, refusing to give detailed information about a loan, intimidation or threats, taking items such as a bank card or passport until the debt is paid, and taking things from you if you do not pay on time.

The England Illegal Money Lending Team (IMLT) is a dedicated team of specialists that is leading the fight against loan sharks. Council officers have also

trained with the IMLT on how to spot a loan shark and can offer support and advice to any tenants who might fall victim to illegal money lenders.

The IMLT is also keen to point out that you are not in trouble if you have borrowed money or have been paying back a loan from a loan shark – rather the loan sharks are the ones who are committing a crime.

If you or someone you know is affected by illegal money lending, you can contact Stop Loan Sharks for support on 0300 555 2222 or visit [www.stoploansharks.co.uk](http://www.stoploansharks.co.uk). Live chat is available on the website between 9am and 5pm, Monday to Friday.

If you need to borrow money, credit unions are a safe ethical option. They're local, friendly, and not-for-profit. Find out more about savings and loans products available from HertSavers Credit Union at [www.hertsavers.co.uk](http://www.hertsavers.co.uk)



**STOP LOAN SHARKS**  
Intervention . Support . Education





Left: Congratulations to Sharon Walsh for winning our Jubilee photo competition. Our Youth Council judges liked the community feel of this picture and thought it characterised exactly what the Jubilee celebrations were about.



There were street parties and celebrations all over Welwyn Hatfield to mark the Queen's Platinum Jubilee as friends, neighbours and pets (!) came together to enjoy this momentous milestone.

Thank you to everyone who shared pictures of their celebrations, it looks like you all had great fun.



# Summer Security

As we open our homes and hearts to the summer sunshine (hopefully!) don't become complacent about home security. Keep your homes safe and happy.

The Private Sector Housing Team at Welwyn Hatfield have launched a new discretionary Crime Prevention Grant for small-scale home security and home safety measures. However, it does not cover costs of maintenance or subscription services for alarm systems.

A maximum of £2,000 is available to homeowners and tenants aged 60 and over, or to people with disabilities or on low incomes.

Referrals for home security improvements will normally be made by the local Crime Prevention Officer. Please call 101 for further advice about crime prevention.

Landlords may make an application where works are communal and where more than one dwelling will benefit. In these instances, the council will make a contribution of 75 % towards the cost of the works up to a maximum of £1,000.



## SOME SUMMER HOME SECURITY TIPS

**1** Check your ground floor windows are closed and locked when you go to bed.

**2** Don't leave keys near entry points, where they can be 'fished' or 'hooked' out through a window, letterbox or cat flap.

**3** Ensure windows and doors are closed and locked when you are out. Don't leave small windows open believing them to be safe.

**4** When out in your garden make sure windows and doors at the front of the house are secure. It only takes a moment for someone to get into your home and take things.



**5** Cut the front and back lawns and trim any plants that burglars could hide behind.

**6** If you are going on holiday, don't advertise the fact on social media e.g. Facebook, Instagram or Twitter.

## Peace of mind with PAL



**PAL Gold Landlords go above and beyond their legal requirements to provide quality rented homes to their tenants.**

This includes ensuring their private rented properties are fitted with at least two additional security measures such as:

- an intruder alarm system
- security lighting
- security door viewer ('spy hole')
- secure post box
- secure bicycle storage.



PAL is a landlord accreditation scheme unique to Welwyn Hatfield Borough Council. Please visit: [www.pal-online.org.uk/tenants/](http://www.pal-online.org.uk/tenants/) for more information.





# Affordable Housing

As part of our commitment to delivering new affordable homes for local people, this autumn we will be launching Minster House, our contemporary older-persons housing scheme at Minster Close in Hatfield.

The development will provide 91 light, spacious and adaptable one and two-bedroomed apartments for residents on our Housing Needs Register that are over 60 or with disability requirements.

The scheme has been developed as part of our Older Person's Housing Strategy. One of the objectives is to provide a quality offer to existing tenants who are living in homes that are larger than they need, therefore freeing up family homes for households in need.

If you want to find out more about this exciting new development and/or express an interest, contact our Housing Allocations Team by calling **01707 357090** or emailing **housingallocationsteam@welhat.gov.uk**

Further information on the Minster House development can be found on our website **one.welhat.gov.uk/minster-house**



**READ ALL ABOUT IT!**

To get hold of the Minster House brochure, please visit the website and request a copy.



## GLL – championing our community



The Welwyn Hatfield Community Fund, created as a result of the merger between Finesse Leisure and Greenwich Leisure Limited (GLL), encourages participation in sport and other leisure activities, whatever the age or ability.

At its heart is a focus on social responsibility, supporting local clubs and organisations to help residents improve their physical and mental health. Grants of up to £50,000 can be applied for from the fund.

To date, 21 community projects have received funding, with over £145,000 awarded across a hugely

diverse range of physical activities. This includes the Friends of Danesbury Fernery, in Welwyn; the Hatfield Menshed Bike Project; North Mymms Cricket Club; Welwyn Hatfield Sea Cadets and many more.

To apply or find out more, visit **www.better.org.uk/whcf**



# Step into summer with the Healthy Hub

If you're looking to take advantage of summer's warmer weather and longer days to get more active, then check out the Welwyn Hatfield Healthy Hub website for loads of ideas and advice to help you get started.

The Healthy Hub is your local one-stop shop for health, sports and wellbeing.

Whether you're aiming to take up a new sport, quit smoking or improve your mental health, the Healthy Hub can point you in the right direction.

You can sign up on the website to receive their monthly bulletins which are packed full of information about local initiatives and events focussed on improving your physical and mental wellbeing.

There's also the monthly Healthy Hub pop-up clinics around the borough which give you the opportunity to find out about what's on offer locally.

If you're a local provider of a health service or activity and would like to join our Healthy Hub family please get in touch at [healthyhub@welhat.gov.uk](mailto:healthyhub@welhat.gov.uk)



**Healthy  
hub**  
Welwyn Hatfield



**Makes 12**

## Iceberry Lollies

### Ingredients

- 12 x Strawberries
- 12 x Raspberries

- 12 x Blueberries
- 125ml Crème fraîche
- Cocktail sticks

### Method

**1** Starting with the strawberry (largest fruit), add one of each berry to a cocktail stick.

**2** Place on a baking tray and place in the freezer for a few hours (or until frozen).

**3** Remove from freezer and serve immediately with some crème fraîche.

**TOP  
TIPS**

This is a fun activity for children to be involved with. Get them to make the 'fruit kebabs' and then eat them like ice lollies. It's a great way to get some of their 'five a day.'

[www.healthyhub.welhat.gov.uk](http://www.healthyhub.welhat.gov.uk)



# Summer eating and **food safety**

We have some easy-to-follow tips so the food at your summer events will be memorable for all the right reasons.

If you're preparing food for BBQs and picnics, make sure it is safe to eat.

To ensure risk-free gatherings, remember warm weather and outdoor cooking are the perfect conditions for

bacteria to grow and increase the chance of food poisoning. Risks remain when preparing and serving chilled food in these conditions.

Eating outside safely means thinking

about food safety ahead of time, so on the day you can concentrate on enjoying the fun.

## TOP TIPS

Here are some simple tips if you're making food for large numbers of people this summer, whether it be for a BBQ or a picnic:

- **Wash your hands regularly** with soap and water before food preparation and consumption.
- **Always wash fresh fruit and vegetables**
- **Keep raw and ready-to-eat foods apart.**
- **Do not use food past its use-by date.**
- **Always read any cooking instructions** and make sure food is properly cooked before you serve it – it needs to be piping hot.
  - **Ensure food preparation areas are cleaned and sanitised** before and after use and equipment is washed in hot soapy water.
  - **Plan ahead to keep your food cool** until you're ready to eat. Any foods you would usually keep in the fridge at home also need to be kept cool on your picnic. This includes any food with a use-by-date, cooked dishes, salads and dairy products.
- **Place these foods in a cool box or cool bag** with ice or frozen gel packs. Distribute these throughout the box or bag, not all at the bottom. You can also use frozen drinks to help keep your cool box cold. Store cold food below five degrees to prevent bacteria from growing.



**Food Standards Agency**  
food.gov.uk

For more information about food safety, see the Food Standards Agency website [www.food.gov.uk](http://www.food.gov.uk)



# Your waste collection calendar for the next year

**Black boxes are for your black rubbish bin and food caddy.**

**Blue-lidded recycling bin, food caddy and brown compost bin (for those that subscribe to the garden waste service).**

Look for your collection day and then follow across the month to see which dates your bins are collected.

The red framed columns show the changed dates for bank holidays etc, for example what would be the Monday 18 April collection will be on Tuesday 19 instead.



MY COLLECTION DAY IS:

## North Welwyn Hatfield collections

APRIL 2022					
Mon	Mar 28	4	11	Tu 19	25
Tue	Mar 29	5	12	We 20	26
Wed	Mar 30	6	13	Th 21	27
Thu	Mar 31	7	14	Fr 22	28
Fri	1	8	15	Sa 23	29

MAY 2022					
Mon	Tu 3	9	16	23	Sa 28
Tue	We 4	10	17	24	Mo 30
Wed	Th 5	11	18	25	Tu 31
Thu	Fr 6	12	19	26	
Fri	Sa 7	13	20	27	

JUNE 2022					
Mon		Tu 7	13	20	27
Tue		We 8	14	21	28
Wed		Th 9	15	22	29
Thu	We 1	Fr 10	16	23	30
Fri	Mo 6	Sa 11	17	24	

JULY 2022					
Mon		4	11	18	25
Tue		5	12	19	26
Wed		6	13	20	27
Thu		7	14	21	28
Fri	1	8	15	22	29

AUGUST 2022					
Mon	1	8	15	22	Tu 30
Tue	2	9	16	23	We 31
Wed	3	10	17	24	
Thu	4	11	18	25	
Fri	5	12	19	26	

SEPTEMBER 2022					
Mon		5	12	19	26
Tue		6	13	20	27
Wed	Th 1	7	14	21	28
Thu	Fr 2	8	15	22	29
Fri	Sa 3	9	16	23	30

OCTOBER 2022					
Mon	3	10	17	24	31
Tue	4	11	18	25	
Wed	5	12	19	26	
Thu	6	13	20	27	
Fri	7	14	21	28	

NOVEMBER 2022					
Mon		7	14	21	28
Tue	1	8	15	22	29
Wed	2	9	16	23	30
Thu	3	10	17	24	
Fri	4	11	18	25	

DECEMBER 2022					
Mon		5	12	19	We 28
Tue		6	13	20	Th 29
Wed		7	14	21	Fr 30
Thu	1	8	15	22	
Fri	2	9	16	23	

JANUARY 2023					
Mon		Th 5	We 11	Tu 17	23 30
Tue		Fr 6	Th 12	We 18	24 31
Wed		Sa 7	Fr 13	Th 19	25
Thu	Tu 3	Mo 9	Sa 14	Fr 20	26
Fri	We 4	Tu 10	Mo 16	Sa 21	27

FEBRUARY 2023					
Mon		6	13	20	27
Tue		7	14	21	28
Wed	1	8	15	22	
Thu	2	9	16	23	
Fri	3	10	17	24	

MARCH 2023					
Mon		6	13	20	27
Tue		7	14	21	28
Wed	1	8	15	22	29
Thu	2	9	16	23	30
Fri	3	10	17	24	31

## Checking your collection day, bank holidays and service disruption

You can check if your collection is North (Blue) or South (Red) and your next collection dates by visiting [www.welhat.gov.uk](http://www.welhat.gov.uk)

You can also find up-to-date information on general disruption, service changes following adverse weather conditions, as well as service changes and bank holiday arrangements.





# Your waste collection calendar for the next year

**Black boxes are for your black rubbish bin and food caddy.**

**Blue-lidded recycling bin, food caddy and brown compost bin (for those that subscribe to the garden waste service).**

Look for your collection day and then follow across the month to see which dates your bins are collected.

The red framed columns show the changed dates for bank holidays etc, for example what would be the Monday 18 April collection will be on Tuesday 19 instead.



**MY COLLECTION DAY IS:**

## South Welwyn Hatfield collections

### APRIL 2022

Mon	Mar 28	4	11	Tu 19	25
Tue	Mar 29	5	12	We 20	26
Wed	Mar 30	6	13	Th 21	27
Thu	Mar 31	7	14	Fr 22	28
Fri	1	8	15	Sa 23	29

### MAY 2022

Mon	Tu 3	9	16	23	Sa 28
Tue	We 4	10	17	24	Mo 30
Wed	Th 5	11	18	25	Tu 31
Thu	Fr 6	12	19	26	
Fri	Sa 7	13	20	27	

### JUNE 2022

Mon		Tu 7	13	20	27
Tue		We 8	14	21	28
Wed		Th 9	15	22	29
Thu	We 1	Fr 10	16	23	30
Fri	Mo 6	Sa 11	17	24	

### JULY 2022

Mon		4	11	18	25
Tue		5	12	19	26
Wed		6	13	20	27
Thu		7	14	21	28
Fri	1	8	15	22	29

### AUGUST 2022

Mon	1	8	15	22	Tu 30
Tue	2	9	16	23	We 31
Wed	3	10	17	24	
Thu	4	11	18	25	
Fri	5	12	19	26	

### SEPTEMBER 2022

Mon		5	12	19	26
Tue		6	13	20	27
Wed	Th 1	7	14	21	28
Thu	Fr 2	8	15	22	29
Fri	Sa 3	9	16	23	30

### OCTOBER 2022

Mon	3	10	17	24	31
Tue	4	11	18	25	
Wed	5	12	19	26	
Thu	6	13	20	27	
Fri	7	14	21	28	

### NOVEMBER 2022

Mon		7	14	21	28
Tue	1	8	15	22	29
Wed	2	9	16	23	30
Thu	3	10	17	24	
Fri	4	11	18	25	

### DECEMBER 2022

Mon		5	12	19	We 28
Tue		6	13	20	Th 29
Wed		7	14	21	Fr 30
Thu	1	8	15	22	
Fri	2	9	16	23	

### JANUARY 2023

Mon		Th 5	We 11	Tu 17	23	30
Tue		Fr 6	Th 12	We 18	24	31
Wed		Sa 7	Fr 13	Th 19	25	
Thu	Tu 3	Mo 9	Sa 14	Fr 20	26	
Fri	We 4	Tu 10	Mo 16	Sa 21	27	

### FEBRUARY 2023

Mon		6	13	20	27
Tue		7	14	21	28
Wed	1	8	15	22	
Thu	2	9	16	23	
Fri	3	10	17	24	

### MARCH 2023

Mon		6	13	20	27
Tue		7	14	21	28
Wed	1	8	15	22	29
Thu	2	9	16	23	30
Fri	3	10	17	24	31

## Checking your collection day, bank holidays and service disruption

You can check if your collection is North (Blue) or South (Red) and your next collection dates by visiting [www.welhat.gov.uk](http://www.welhat.gov.uk)

You can also find up-to-date information on general disruption, service changes following adverse weather conditions, as well as service changes and bank holiday arrangements.







# THE WATERMILL MILL GREEN

Join us down at The Watermill at Mill Green for a series of live events this summer.

Throughout the summer, a local artist or group will play in our beautiful gardens. Enjoy an eclectic array of music with **Welwyn Garden City's Male Voice Choir** singing traditional spirituals; **Welwyn Harmony**, the county's only ladies' barbershop group; local pop duo **Rylands Heath**; and classical music and show tunes from **Hatfield and Welwyn Community Choir**. Take a seat in our garden or bring your own blanket, relax, and enjoy!

**Friday 19 August** is the day the teddy bears have their picnic down at The Watermill on **Teddy Bear Fun Day**. With bear inspired craft activities, a teddy bear hunt through our

gardens and lots more besides, you're sure of a big surprise!

Meanwhile our sister site, the **Roman Baths at Welwyn**, will be open throughout the summer holidays, keeping the kids entertained.

**The Miller's Kitchen** at The Watermill will be running extended opening hours for summer, offering light refreshments from Wednesdays to Sundays, 13 July to 28 August, so pop down and find out why our cream teas are one of the borough's best-kept secrets!

For more information and to book for any of our events please visit [www.millgreenmuseum.co.uk](http://www.millgreenmuseum.co.uk)



## THE WATERMILL MILL GREEN

The Watermill and Mill Green Museum is open Thursdays to Sundays 10am – 5pm



## ROMAN BATHS WELWYN

Welwyn Roman Baths is open Saturdays 10am – 4pm and during Hertfordshire school holidays, weekday afternoons 1pm – 4pm.



# Campus West

WELWYN GARDEN CITY



## THE CINEMA

# Welwyn Garden City's Independent 3-screen cinema

Just a short walk from the town centre, opposite the green facing John Lewis, there's something for everyone at **Campus West**.

Enjoy the latest movie releases in our friendly cinema, join friends and family for fun on wheels at **Roller City**, unwind at **Humphrey's Café** or let the kids explore **Soft Play City**, our air-conditioned soft play area for babies and children up to 8 years.

Screenings this summer include **The**

**Railway Children Return**, starring Jenny Agutter and Sheridan Smith, and **Thor: Love and Thunder**, starring Christian Bale and Russell Crowe.

Catch live on-screen performances from the Royal Opera House, The Met in New York and, on September 8, live on screen will be Shakespeare's **Much Ado About Nothing** from the National Theatre.

Plus, **Humphrey's Café** is there for before, during and after screenings, with food served until 6pm.

# It's Panto!

8 December 2022 – 2 January 2023  
– Tickets on sale now!

The highly acclaimed **Campus West Panto** returns with a swashbuckling adventure on the high seas!

Our 2022 **Treasure Island** will be a new and completely original version, written by the fantastic scriptwriting duo, Jonas Cemm and Joe Sargent from JoJoPanto, and produced by Campus West. Join us as we set sail for a rip-roaring adventure that will delight the whole family!

The now famous Blue Panto – *strictly for adults* – will be **Pleasure Island**, which takes the hurly-burly fun, saucy gags and cheeky slap 'n' tickle to a whole new level!

For more information and to book your tickets, visit [campuswest.co.uk](http://campuswest.co.uk)



Visit our website [www.campuswest.co.uk](http://www.campuswest.co.uk) for information and to buy tickets