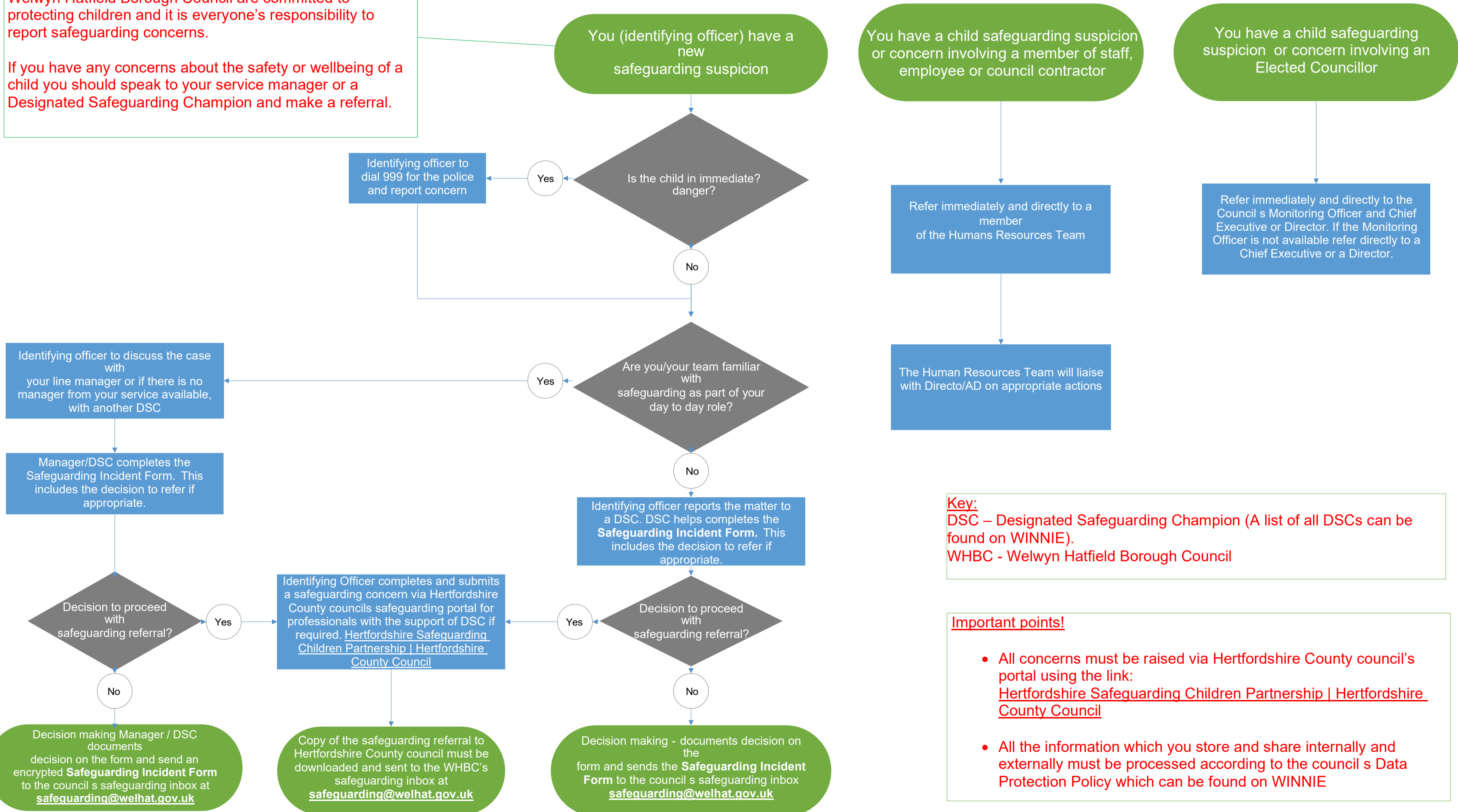


Appendix A: Safeguarding Children referral and reporting pathway for all employees and Members



Welwyn Hatfield Borough Council are committed to protecting children and it is everyone's responsibility to report safeguarding concerns.

If you have any concerns about the safety or wellbeing of a child you should speak to your service manager or a Designated Safeguarding Champion and make a referral.



Key:
 DSC – Designated Safeguarding Champion (A list of all DSCs can be found on WINNIE).
 WHBC - Welwyn Hatfield Borough Council

- Important points!**
- All concerns must be raised via Hertfordshire County council's portal using the link: [Hertfordshire Safeguarding Children Partnership | Hertfordshire County Council](https://www.hertfordshire.gov.uk/safeguarding)
 - All the information which you store and share internally and externally must be processed according to the council's Data Protection Policy which can be found on WINNIE