

WELWYN HATFIELD BOROUGH COUNCIL

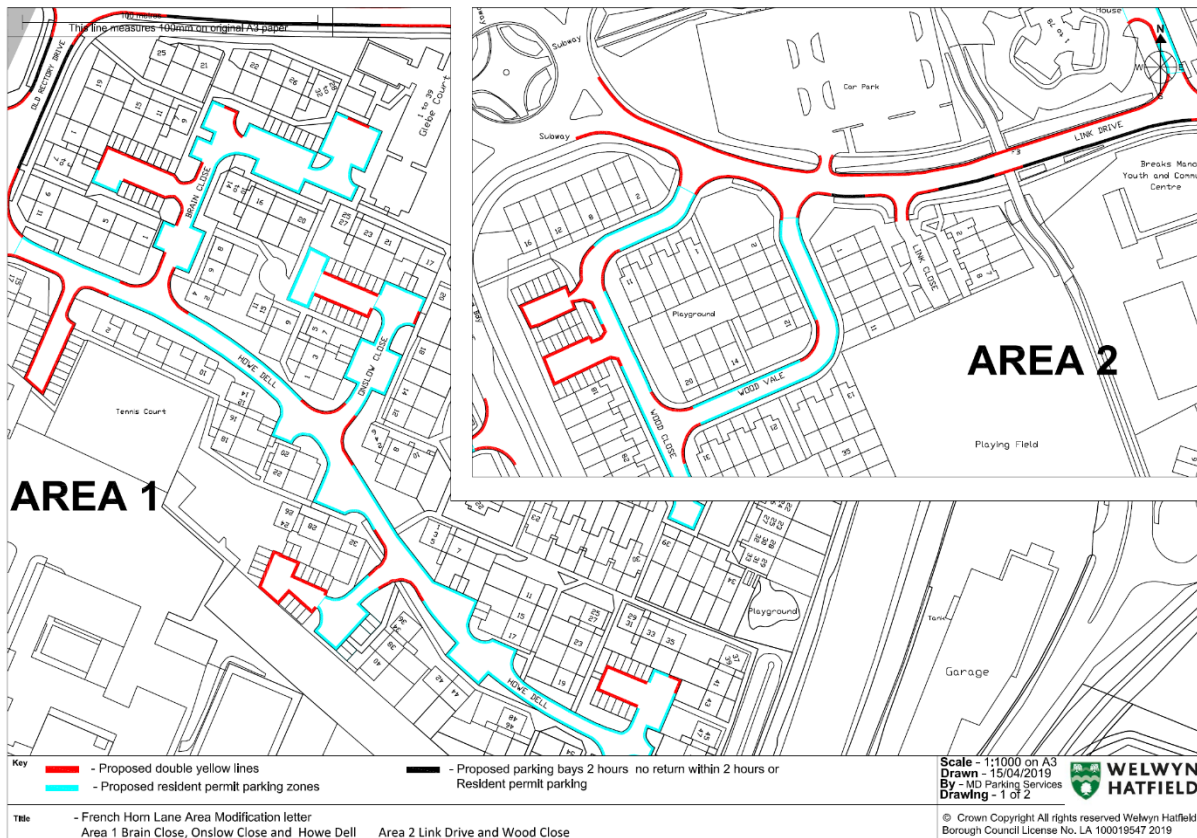
THE LOCAL AUTHORITIES' TRAFFIC ORDERS (PROCEDURE) (ENGLAND AND WALES) REGULATIONS 1996

THE BOROUGH OF WELWYN HATFIELD (VARIOUS ROADS, FRENCH HORN LANE AREA, HATFIELD) (RESTRICTION OF WAITING, PARKING PLACES AND PERMIT PARKING ZONES) ORDER 2019

NOTICE is given that the Welwyn Hatfield Borough Council, as a consequence of responses received to the Notice of Intention published on 20 March 2019, proposing to make a Traffic Regulation Order in various roads Hatfield under the Road Traffic Regulation Act 1984, propose under provisions of Regulation 14 of The Local Authorities' Traffic Orders (Procedure) (England and Wales) Regulations 1996 to modify the above named Order(s).

The effect of the modifications highlighted in the plan will be as follows:

- To restrict parking in front of garages located in access roads in Brain Close, Howe Dell and Onslow close and Wood Close by means of a No waiting at any time restriction (Double Yellow Lines).
- To restrict parking under the footbridge in Link Drive with a No waiting at any time restriction (Double yellow lines)



Should you wish to make any representations regarding the proposed modifications please write to: Martin Donohoe, Parking Services, Council Offices, Welwyn Garden City, AL8 6AE, tel: 01707 357000 email: parking@welhat.gov.uk, representations concerning the proposed modifications should be submitted, so as to be received by the Authority within 14 days of the date of this Notice.

Consulting on this scheme is a statutory duty of Welwyn Hatfield Borough Council. Any personal data you provide in responding to this Notice will be treated as confidential but will be shared with WHBC Officers; Borough Councillors and contracted third parties who are involved in the statutory process. We will not share identifiable data with third parties outside of the statutory process. Guidance on your rights in respect of personal data are published in the Privacy Policy on our website www.welhat.gov.uk

Ka Ng, Corporate Director, Resources, Environment and Cultural Services,
Council Offices, The Campus, Welwyn Garden City, Herts AL8 6AE
16 April 2019.