

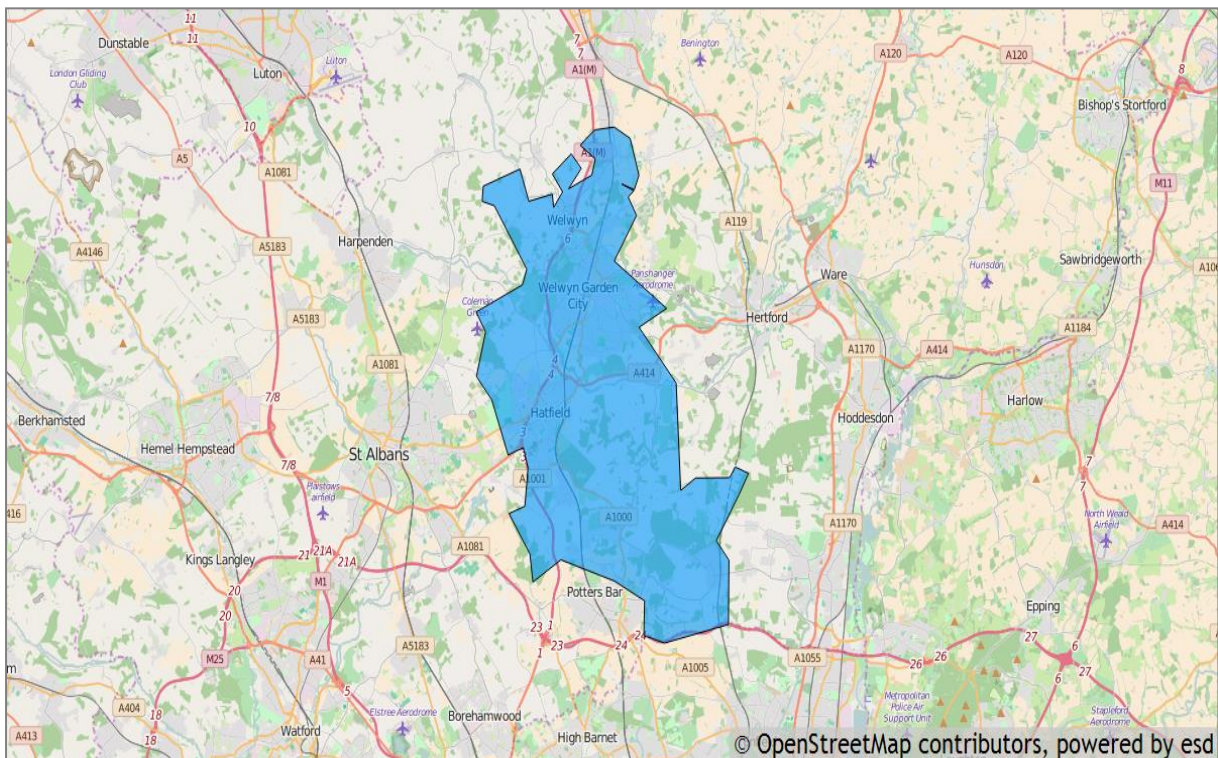
## Demographic Profile

Updated: October 2018  
Policy and Communications

### Introduction

This report provides a summary of the latest available information on the demographic make-up of Welwyn Hatfield. This supports our Single Equality Scheme with information, where it exists, about some of the protected characteristics recognised in the legal framework. This report includes data on age, disability, ethnicity, gender, religion or belief.

Welwyn Hatfield is one of the 10 districts/boroughs in Hertfordshire. It has an area of 12,955 hectares which represents 7.88% of the total area of the county.



## Population

There are two main sources of population data, the 10 yearly national Census and the annual mid-year population estimates, produced by the Office for National Statistics (ONS).

The latest (mid-2017) estimate puts the population of Welwyn Hatfield District at 122,300.

The estimated total population of Welwyn Hatfield has increased by approximately 11,700 (10.6%) since the 2011 Census.

### Resident population in Welwyn Hatfield mid-2017

	Welwyn Hatfield
Total	122,300
Males (all ages)	60,300 (49.30%)
Females (all ages)	62,000 (50.70%)
Population density (persons per hectare)	9.44

Source: Office for National Statistics, Mid Year Population Estimates

## Proficiency in Spoken English

The main source of detailed data on languages spoken is the national census. The 2011 Census was the first in which people were asked about their main spoken language and proficiency in speaking English.

In 2011, 91.44% of residents in Welwyn Hatfield had English as their main language. 0.99% of residents did not have English as a main language and could not speak English well. 0.13% of residents could not speak English at all.

### Proficiency in spoken English (percentages) in Welwyn Hatfield in 2011

	Welwyn Hatfield	Hertfordshire	East of England	England
Main language – English	91.44	93.94	94.47	92.02
Main language not English, can speak English very well	3.95	2.90	2.31	3.31
Main language not English, can speak English well	3.50	2.23	2.10	3.01
Main language not English, cannot speak English well	0.99	0.80	0.95	1.39
Main language not English, cannot speak English	0.13	0.13	0.17	0.26

Source: Office for National Statistics, 2011 Census.

## Ethnicity

The main source of detailed ethnic group population data is the National Census. In 2011, the proportion of the total population in Welwyn Hatfield that were in a minority ethnic group (i.e. not White-British) was 23.50%. This compares to a proportion of 11.21% at 2001.

The largest ethnic group is White (English/Welsh/Scottish/Northern Irish/British) which accounts for 76.5% of the population. That compares with a figure of 80.82% for Hertfordshire County as a whole.

**Ethnic group percentages for those living in Welwyn Hatfield in 2011**

	Welwyn Hatfield	Hertfordshire
White: English/Welsh/Scottish/Northern Irish/British	76.50	80.82
White: Irish	1.55	1.55
White: Gypsy or Irish Traveller	0.14	0.10
White: Other	5.89	5.11
Mixed or multiple ethnic group: White and Black Caribbean	0.78	0.80
Mixed or multiple ethnic group: White and Black African	0.38	0.29
Mixed or multiple ethnic group: White and Asian	0.74	0.78
Mixed or multiple ethnic group: Other	0.63	0.60
Asian or Asian British: Indian	3.19	2.58
Asian or Asian British: Pakistani	0.66	1.10
Asian or Asian British: Bangladeshi	0.42	0.50
Asian or Asian British: Chinese	1.73	0.76
Asian or Asian British: Other	1.87	1.56
Black/African/Caribbean/Black British: African	3.56	1.77
Black/African/Caribbean/Black British: Caribbean	0.65	0.78
Black/African/Caribbean/Black British: Other	0.31	0.27
Other ethnic group: Arab	0.51	0.21
Other ethnic group: Any other ethnic group	0.49	0.42

Source: Office for National Statistics, 2011 Census

## Age

Estimates of population are produced by the Office for National Statistics (ONS) each year in between Censuses. These "mid year" estimates are initially based on the previous census figures and are calculated using numbers of birth and deaths in an area and estimates of migration within the UK and to and from the UK. Estimates are produced by gender and five year (quinary) age groups. Estimates are produced at County, District and Unitary Council levels, for Health areas and for higher geographies. At these levels the estimates are classified as "National Statistics". Estimates for Super Output Areas have recently been classified as "National Statistics".

### Age structure of those living in Welwyn Hatfield mid-2017

	Welwyn Hatfield	Hertfordshire
Aged 0-4	7300	75400
Aged 5-9	7500	81000
Aged 10-14	6500	71600
Aged 15-19	8000	65500
Aged 20-24	13600	63700
Aged 25-29	9300	73200
Aged 30-34	8400	77500
Aged 35-39	7900	84500
Aged 40-44	7200	82100
Aged 45-49	7400	85900
Aged 50-54	7900	86800
Aged 55-59	7000	74200
Aged 60-64	5500	60100
Aged 65-69	4900	54800
Aged 70-74	4500	50200
Aged 75-79	3200	35000
Aged 80-84	2900	29200
Aged 85-89	2000	19000
Aged 90+	1200	11100

Source: Office for National Statistics, Mid Year Population Estimates

## Adult Disability & Health

The source of the general health and long-term health problem or disability data is the national census and only provides a snapshot of the situation at that time. General health is a self-assessment of a person's health over the 12 months before the Census. Limiting long-term illness is a self assessment of whether or not a person has a long-term health problem or disability that limits their day-to-day activities and has lasted, or is expected to last, at least 12 months. This includes problems relating to old age.

In 2011, 937 people in Welwyn Hatfield stated that their general health was "very bad", 0.85% of the resident population.

### General Health in Welwyn Hatfield in 2011

	Welwyn Hatfield	Hertfordshire
General health - % Very good	50.89	50.90
General health - % Good	33.92	33.93
General health - % Fair	11.24	11.25
General health - % Bad	3.10	3.07
General health - % Very bad	0.85	0.85

15,908 people stated that they had a long-term health problem or disability that limited their day-to-day activities to some extent, 14.4% of the resident population.

### Long-term Health Problem or Disability in Welwyn Hatfield in 2011

Long-term illness/Disability - % Activities limited a lot	6.26	6.19
Long-term illness/Disability - % Activities limited a little	8.13	8.13
Long-term illness/Disability - % Activities not limited	85.61	85.68

Source: Office for National Statistics, 2011 Census.

## Religion or belief

The main source of detailed religion data is the national Census. In 2011, over half of Welwyn Hatfield's population considered themselves to be Christian (57.54 per cent), with over one quarter of the remaining population confirming they either did not have a religion or did not state one.

The 2011 Census saw increases from 2001 in the percentage of residents considering themselves to be Hindu (1.5 per cent) and Muslim (1.4 per cent).

### Stated Religion for those living in Welwyn Hatfield in 2011 (%)

	Welwyn Hatfield	Hertfordshire
Christian	57.54	58.25
Buddhist	0.81	0.49
Hindu	2.51	1.93
Jewish	0.80	1.91
Muslim	2.54	2.75
Sikh	0.34	0.45
Other religion	0.47	0.45
No religion	27.87	26.53
Religion not stated	7.11	7.23

Source: Office for National Statistics, 2011 Census

## Sexual Orientation (Living Arrangements, Marital & Civil Partnerships)

Specific data on sexual identity is not available for any areas lower than regional level. Other potential indicators of sexual identity / orientation for those in Welwyn Hatfield are shown here.

### Living Arrangements Summary - Living as a couple in 2011

	Welwyn Hatfield	Hertfordshire
Married	38,770	431,456
Cohabiting (opposite sex)	9,176	97,461
Civil partnership	116	1,012
Cohabiting (same sex)	613	5161

Source: Office of National Statistics, 2011 Census

### Living arrangements in 2011 (%)

	Welwyn Hatfield
Couple: Married	44.69
Couple: Cohabiting (opposite sex)	10.58
Couple: Civil partnership or cohabiting (same sex)	0.84
Couple: Civil partnership	0.13
Couple: Cohabiting (same sex)	0.71

Source: Office of National Statistics, 2011 Census

## References

This report was generated using data from:

Office for National Statistics: Census 2011 and mid-year population estimates  
Herts Insight